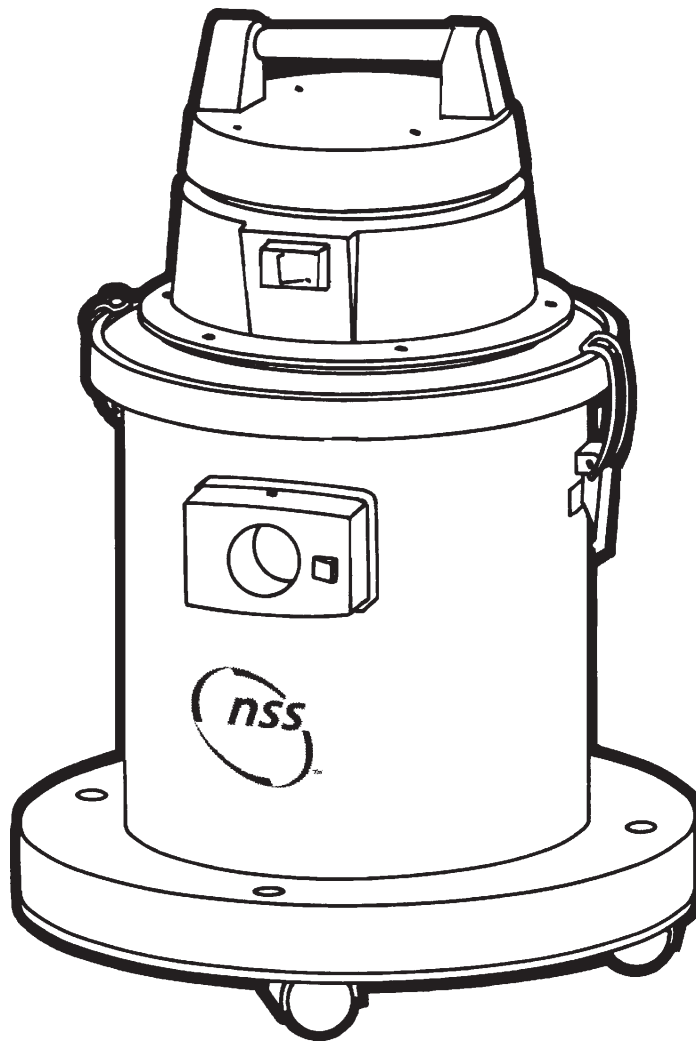


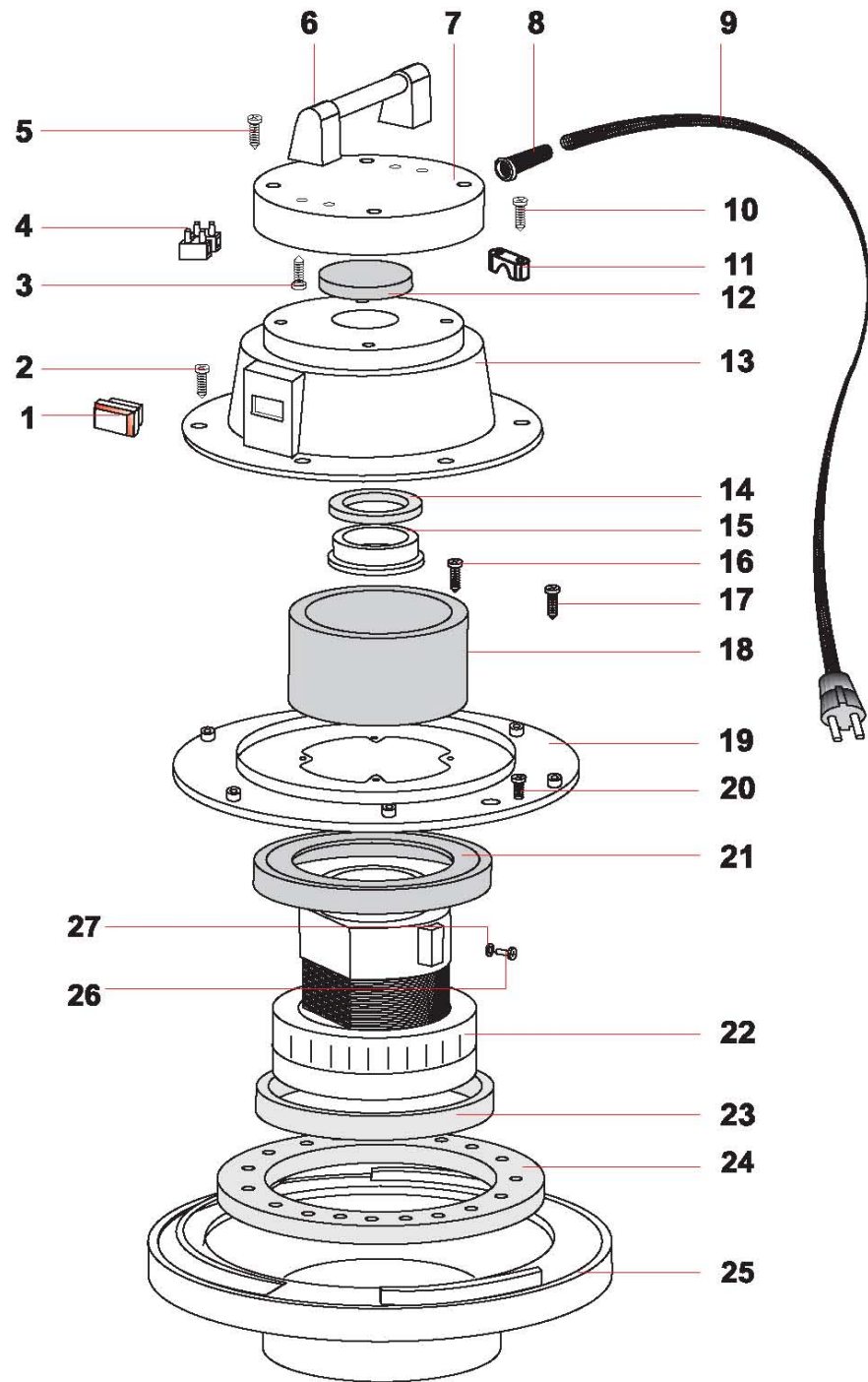
PARTS LIST  
**DESIGNER 4 - WET / DRY VACUUM**



## **MOTOR ASSEMBLY**

| <b>ITEM</b> | <b>PART #</b> | <b>DESCRIPTION</b>   | <b>QTY</b> |
|-------------|---------------|--|------------|
| 1           | 5791411       | SWITCH   | 1          |
| 2           | 5791441       | M5 X 20 THREAD CUTTING SCREW                               | 6          |
| 3           | 5791441       | M5 X 20 THREAD CUTTING SCREW                               | 4          |
| 4           | 5791431       | TERMINAL BLOCK   | 1          |
| 5           | 5791451       | M5 X 30 THREAD CUTTING SCREW                               | 4          |
| 6           | 5791481       | LIFT HANDLE ASSEMBLY                                       | 1          |
| 7           | 5790551       | TOP COVER - 120 VOLT                                       | 1          |
|             | 5791971       | TOP COVER - 240 VOLT                                       | 1          |
| 8           | 5791771       | STRAIN RELIEF - 120 VOLT                                   | 1          |
|             | 5791021       | STRAIN RELIEF - 240 VOLT                                   | 1          |
| 9           | 5794001       | CORD 16-3 SJTW - 50 FOOT - 120 VOLT                        | 1          |
|             | 0294391       | SHUKO CORD - 50FT - 240 VOLT                               | 1          |
| 10          | 5791441       | M5 X 20 THREAD CUTTING SCREW                               | 2          |
| 11          | 5791041       | CORD CLAMP   | 1          |
| 12          | 5791731       | FILTER   | 1          |
| 13          | 5790511       | LOWER COVER - 120 VOLT                                     | 1          |
|             | 5791951       | LOWER COVER - 240 VOLT                                     | 1          |
| 14          | 5791741       | WASHER - H8 D 85 X 65                                      | 1          |
| 15          | 5790261       | PLASTIC RING FOR MOTOR                                     | 1          |
| 16          | 5791441       | M5 X 20 THREAD CUTTING SCREW                               | 4          |
| 17          | 5797161       | M5 X 14 PHILLIPS HEAD SCREW                                | 2          |
| 18          | 5791711       | FOAM FILTER  | 1          |
| 19          | 5791881       | MOTOR SEPARATOR - 120 VOLT                                 | 1          |
|             | 5792021       | MOTOR SEPARATOR - 240 VOLT                                 | 1          |
| 20          | 5790341       | M5 X 8 THREAD CUTTING SCREW                                | 1          |
| 21          | 5791721       | "L" GASKET   | 1          |
| 22          | 0296439       | MOTOR 120 VOLT - 60 HZ - REPLACEMENT - LAMB - INCLUDES:    | 1          |
| 22A         | 5791561       | CARBON BRUSH REPLACEMENT FOR ORIGINAL MOTOR                | 2          |
|             | 0299331       | CARBON BRUSH REPLACEMENT FOR LAMB MOTOR                    | 2          |
| 22          | 0296459       | MOTOR 240 VOLT - 50/60 HZ - REPLACEMENT - LAMB - INCLUDES: | 1          |
| 22A         | 5791601       | CARBON BRUSH REPLACEMENT FOR ORIGINAL MOTOR                | 2          |
|             | 0299331       | CARBON BRUSH REPLACEMENT FOR LAMB MOTOR                    | 2          |
| 23          | 5791721       | "L" GASKET   | 1          |
| 24          | 5791691       | WASHER MTP - 65MM 18D 230 X 145                            | 1          |
| 25          | 5791811       | BASE WITH GASKET   | 1          |
| 26          | 5792551       | M4 X 8 SCREW - 120 VOLT ONLY                               | 1          |
| 27          | 5792651       | M4 HEX NUT WITH STAR LOCK WASHER - 120 VOLT ONLY           | 1          |
| *           | 5790411       | WIRE WITH RESISTANCE                                       | 1          |
| *           | 5798361       | CONNECT WIRES - BLUE / BROWN - SET OF 2                    | 2          |
| *           | 5798371       | GROUND WIRES - GREEN / YELLOW                              | 1          |
| *           | 5798381       | WIRE TERMINAL  | 2          |
| *           | 5798391       | WIRE TIES  | 2          |
| N/S         | 5790971       | WARNING DECAL - 120 VOLT ONLY                              | 1          |
| N/S         | 5790981       | GROUNDING DECAL - 120 VOLT ONLY                            | 1          |
| N/S         | 5790991       | ICON ADAPTOR DECAL - 240 VOLT ONLY                         | 1          |
| N/S         | 5790951       | NSS LOGO - DECAL 3.5 X 7                                   | 2          |
| N/S         | 5790961       | WET / DRY DECAL  | 1          |
| N/S         | 5790921       | NAME IDENTIFIER DECAL                                      | 1          |

# MOTOR ASSEMBLY



## ***FILTER ASSEMBLY***

| <b><u>ITEM</u></b> | <b><u>PART #</u></b> | <b><u>DESCRIPTION</u></b>                                   | <b><u>QTY</u></b> |
|--------------------|----------------------|---|-------------------|
| 1                  | 5790871              | SLEEVE  | 4                 |
| 2                  | 5798141              | M5 X 20 TRUSS HEAD PHILLIPS THREAD CUTTING SCREW - 120 VOLT | 4                 |
|                    | 5791641              | M5 X 25 TRUSS HEAD PHILLIPS THREAD CUTTING SCREW - 240 VOLT | 4                 |
| 3                  | 5790591              | SCREEN SUPPORT  | 1                 |
| 4                  | 5795011              | FLOAT SCREEN  | 1                 |
| 5                  | 5790621              | LOWER FLOAT   | 1                 |
|                    | 5793341              | FILTER BAG ASSEMBLY - INCLUDES:                             | 1                 |
| 6                  | 5791201              | BAG RING  | 1                 |
| 7                  | 5790861              | POLYESTER FILTER  | 1                 |
| 8                  | 5790851              | LOWER BASKET  | 1                 |

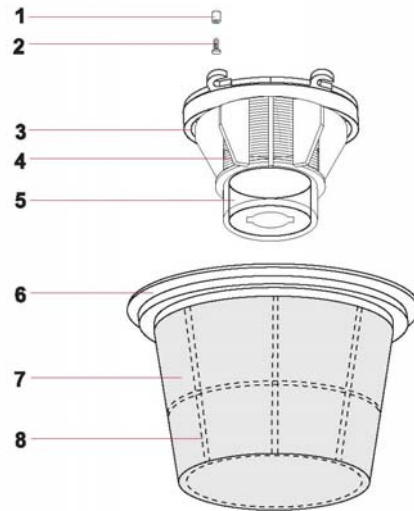
## ***TANK ASSEMBLY***

| <b><u>ITEM</u></b> | <b><u>PART #</u></b> | <b><u>DESCRIPTION</u></b>           | <b><u>QTY</u></b> |
|--------------------|----------------------|-------------------------------------|-------------------|
| 1                  | 5793301              | CONTAINER                           | 1                 |
| 2                  | 5791361              | M5 X 11 POP RIVET                   | 4                 |
| 3                  | 5792531              | LID CLAMP                           | 2                 |
| 4                  | 5791451              | M5 X 30 THREAD CUTTING SCREW        | 4                 |
| 5                  | 5796021              | INTAKE GASKET                       | 1                 |
| 6                  | 5796551              | INTAKE SUPPORT                      | 1                 |
| 8                  | 5793381              | INTAKE DEFLECTOR                    | 1                 |
| 10                 | 5796031              | PLASTIC INTAKE COMPLETE - INCLUDES: | 1                 |
|                    | 5793411              | INTAKE, PLASTIC                     | 1                 |
| 7                  | 5793371              | SPRING                              | 1                 |
| 9                  | 5793361              | BUTTON - INTAKE                     | 1                 |

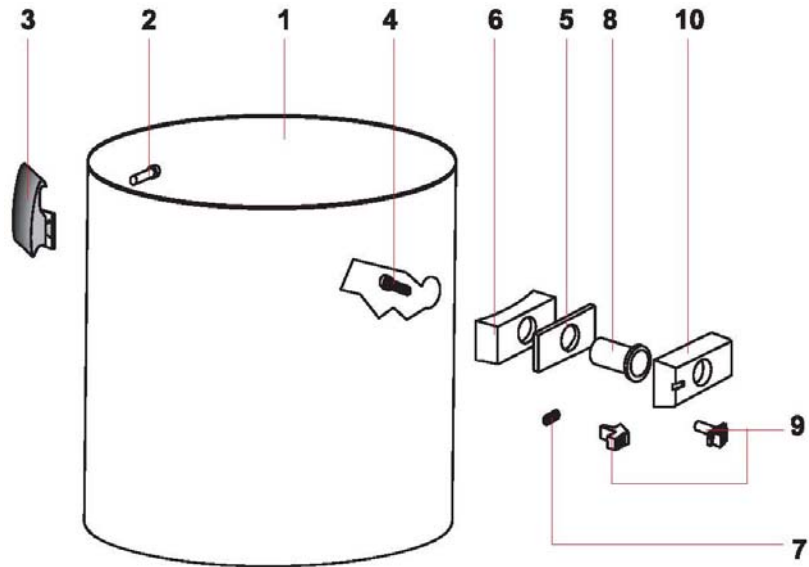
## ***TRANSPORT ASSEMBLY***

| <b><u>ITEM</u></b> | <b><u>PART #</u></b> | <b><u>DESCRIPTION</u></b>   | <b><u>QTY</u></b> |
|--------------------|----------------------|-----------------------------|-------------------|
| 1                  | 5791341              | 8M HEX CAP NUT              | 4                 |
| 2                  | 5791331              | 8M X 24 WASHER              | 4                 |
| 3                  | 5790251              | BASE - 500                  | 1                 |
| 4                  | 5791311              | CASTER - THREADED BALL TYPE | 4                 |

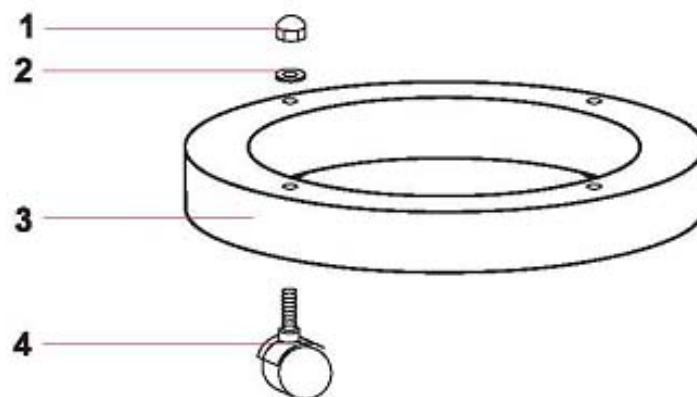
## FILTER ASSEMBLY



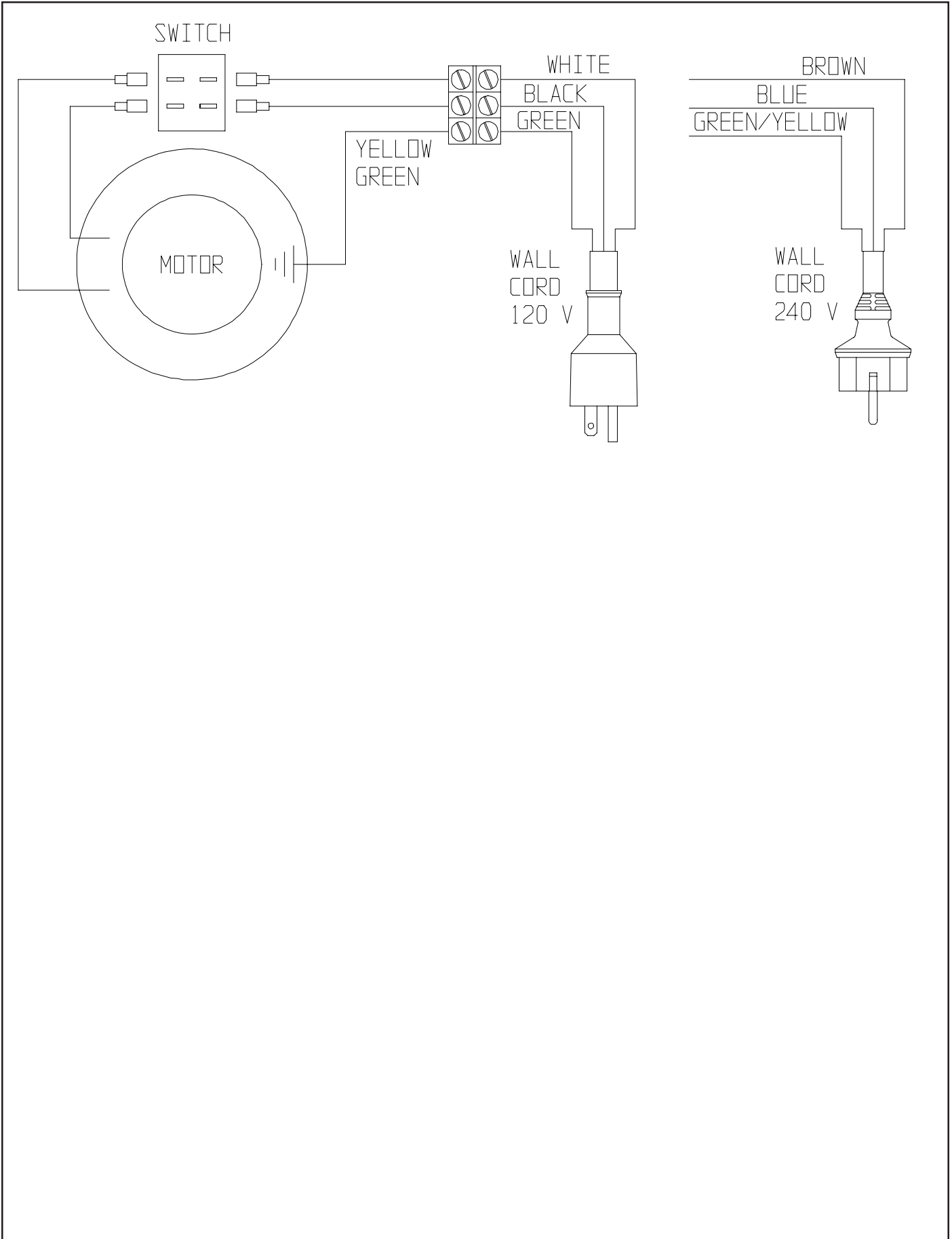
## TANK ASSEMBLY



## TRANSPORT ASSEMBLY



# WIRING DIAGRAM



## ACCESSORIES



5797051 WET / DRY TOOL KIT - INCLUDES:  
5797061 HOSE - 1 1/2" X 8 FEET LONG  
5797181 3 PIECE WAND  
5790111 2 1/5" ROUND BRUSH TOOL  
5790121 CREVICE TOOL  
5790131 CARPET / BARE FLOOR TOOL - 10 "  
5790171 UPHOLSTERY TOOL  
5797211 17 INCH SQUEEGEE TOOL

5790229 17 INCH SQUEEGEE RUBBER - SET OF 4 - REPLACEMENT



5793341 FILTER BAG WITH RING - INCLUDES  
BAG RING, BAG STAND, AND FILTER BAG

5797061 1 1/2" X 8' HOSE  
5797081 1 1/2" WAND HOSE CUFF  
5797091 INTAKE HOSE CUFF

5790021 HOSE COUPLING



2590309 1 1/2" EXTENSION HOSE CONNECTOR



**NSS® Enterprises, Inc.**

3115 Frenchmens Road, Toledo, Ohio 43607  
PHONE (419) 531-2121 FAX (419) 531-3761

**NSS® Enterprises, Inc. European Distribution Centre**  
Unit II, Pinfold Trading Estate \* 55 Nottingham Road  
STAPLEFORD, NOTTINGHAM NG9 8AD ENGLAND U.K.  
PHONE: (44) 0115 939 1568 \* FAX: (44) 0115 949 0615