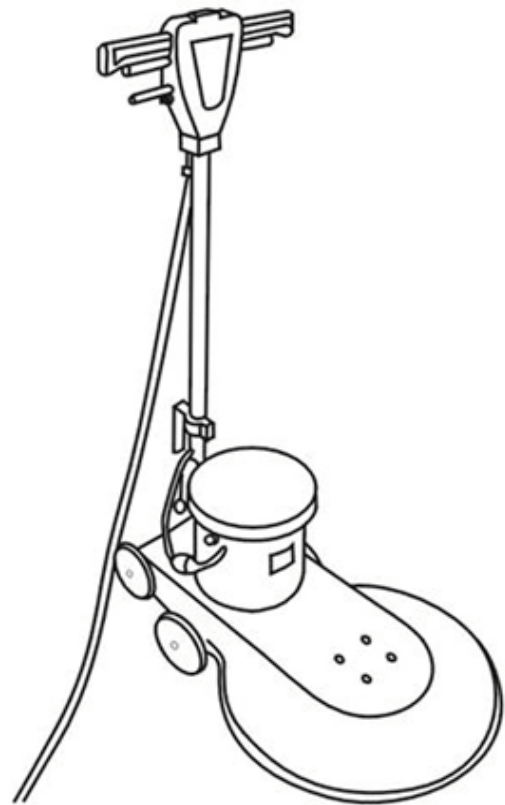


HIGH SPEED FLOOR BURNISHER

Model No.:

608165-1500 RPM HIGH SPEED

Operator and Parts Manual



TENNANT COMPANY
701 NORTH LILAC DRIVE
MINNEAPOLIS, MN 55422

MAILING ADDRESS:
TENNANT COMPANY
P.O. BOX 1452

CUSTOMER SERVICE:
1-800-982-7658
FAX: 1-800-678-4240

TECHNICAL SUPPORT:
1-800-522-7839 EXT: 5356

612755
Rev:02[07-03]

TABLE OF CONTENTS

SAFETY PRECAUTIONS	3-4
MACHINE COMPONENTS	5
OPERATION AND MAINTENANCE	6
TROUBLE SHOOTING	7
PARTS LIST	8-11
WIRING DIAGRAM	12


SAFETY PRECAUTIONS

SAFETY PRECAUTIONS

This machine is intended for commercial use only. It is designed exclusively to burnish floors in an indoor environment and is not constructed for any other use. Use only recommended burnishing pads commercially available floor cleaners and waxes intended for machine application.


All operators must read, understand and practice the following safety precautions.

The following warning alert symbol and the "FOR SAFETY" heading are used throughout this manual as indicated in their description:


 **WARNING:** To warn of hazards or unsafe practices which could result in severe personal injury or death.

FOR SAFETY: To identify actions which must be followed for safe operation of equipment.


Failure to follow these warnings may result in: personal injury, electrocution, electric shock, fire or explosion:

 **WARNING:** Do Not Use Flammable Liquids Or Operate Machine In Or Near Flammable Liquids, Vapors Or Combustible Dusts.

This machine is not equipped with an explosion proof motor. The electric motor will spark upon start up and during operation which could cause a flash fire or explosion if machine is used in an area where flammable vapors/liquids or combustible dusts are present.

 **WARNING:** Do Not Operate With Damaged Power Cord. Do Not Modify Plug. Unplug Power Cord Before Servicing Machine.

If the supply cord is damaged or broken, it must be replaced by the manufacturer or its service agent or a similarly qualified person in order to avoid a hazard.

 **WARNING:** Do Not Use Outdoors. Do Not Expose to Rain. Store indoors.

The following information signals potentially dangerous conditions to the operator or equipment:

FOR SAFETY:

1. Do not operate machine:
 - With flammable liquids or near flammable

vapors as an explosion or flash fire may occur.

- Unless trained and authorized.
- Unless operator manual is read and understood.
- Unless cord is properly grounded.
- With damaged cord or plug.
- If not in proper operating condition.
- In outdoor areas.
- In standing water.
- With the use of an extension cord.

2. Before operating machine.

- Make sure all safety devices are in place and operate properly.
- Place wet floor signs as needed.
- Remove loose objects on floor to prevent dangerous projectiles if struck by spinning pad.

3. When using machine:

- Stay clear of spinning pad.
- Do not run machine over cord.
- Do not pull machine by plug or cord.
- Do not pull cord around sharp edges or corners.
- Wear non-slip shoes.
- Do not close doors on cord.
- Do not unplug by pulling on cord.
- Do not stretch cord.
- Do not handle plug with wet hands.
- Keep cord away from heated surfaces.
- Never activate the power when the handle is in the upright position
- Do not release handles until pad comes to a complete stop.
- Go slow on inclines and slippery surfaces.
- Never allow children to play on or around.
- Report machine damage or faulty operation immediately.
- Follow mixing and handling instructions on chemical containers.

4. Before leaving machine:

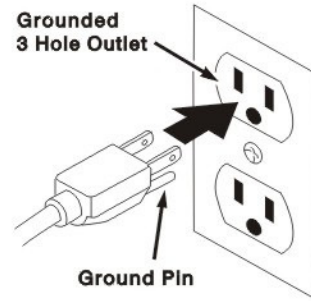
- Turn off machine .
- Unplug cord from wall outlet.

5. When servicing machine:

- Unplug cord from wall outlet.
- Avoid moving parts. Do not wear loose jackets, shirts, or sleeves.
- Use manufacturer supplied or approved replacement parts.
- All repairs must be performed by a qualified service person.
- Do not modify the machine from its original design

6. When transporting machine:

- Get assistance when lifting machine.
- Unplug cord from wall outlet.
- Use tie-down straps to secure machine to truck or trailer.

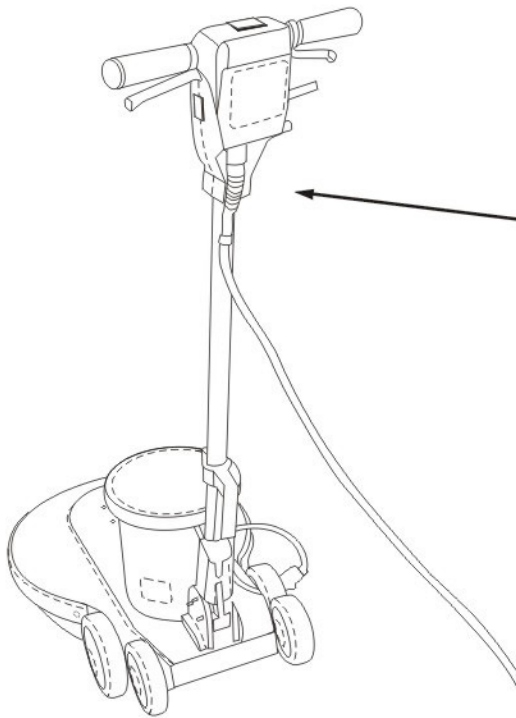


GROUNDING INSTRUCTIONS

Machine must be grounded. If it should malfunction or breakdown, grounding provides a path of least resistance for electrical current to reduce the risk of electrical shock. This machine is equipped with a cord having an equipment-grounding conductor and grounding plug. The plug must be plugged into an appropriate outlet that is properly installed in accordance with all local codes and ordinances. Do not remove ground pin; if missing, replace plug before use.

WARNING LABEL

The warning label appears on the machine in the location indicated. Replace label if it becomes damaged or illegible.



WARNING LABEL - Located on backside of machine handle.

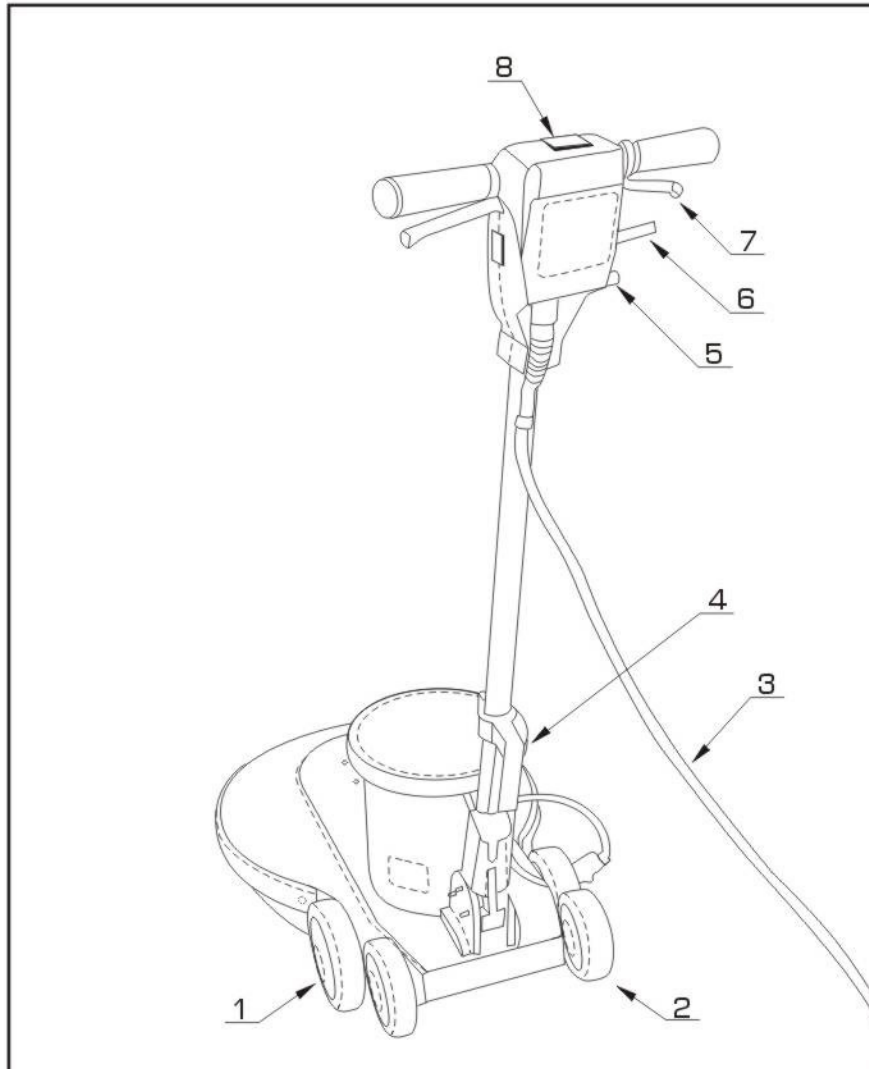
⚠ WARNING

FAILURE TO FOLLOW THESE WARNINGS MAY RESULT IN: PERSONAL INJURY, ELECTROCUTION, ELECTRICAL SHOCK, FIRE OR EXPLOSION.

-   Do Not Use Flammable Liquids Or Operate Machine In Or Near Flammable Liquids, Vapors Or Combustible Dusts.
-   Do Not Operate With Damaged Power Cord. Do Not Modify Plug. Unplug Power Cord Before Servicing Machine.
-   Do Not Use Outdoors. Do Not Expose To Rain. Store Indoors.

613286

 **FOR SAFETY: READ THE OWNER'S MANUAL BEFORE USING MACHINE.**



1. 6.4" Wheel
2. 5" Wheel
3. Cable
4. Hook, Cable
5. Circuit Breaker
6. Handle Leveling
7. Handle Switch
8. Button Safety Lock

OPERATION AND MAINTENANCE

MACHINE SETUP AND OPERATION

FOR SAFETY: Do not operate machine unless operation manual is read and understood.

! WARNING: Do Not Use Flammable Liquids Or Operate machine In Or Near Flammable Liquids, Vapors Or Combustible Dusts.

This machine is not equipped with an explosion proof motor. The electric motor will spark upon start up and during operation which could cause a flash fire or explosion if machine is used in an area where flammable vapors/liquids or combustible dusts are present.

FOR SAFETY: Do not operate machine unless cord is properly grounded. Do not operate machine with damaged cord or plug. Do not operate machine with the use of an extension cord.

1. Prepare the floor area by sweeping, Dusting or mopping as needed.
2. Select the correct floor pad, the lighter color floor pads (buff or white) are normally used for burnishing procedure. Pads with high or low sections or hard or soft spots are unacceptable. Pads of open weave are recommended as close weave pads tend to load up fast bog down the machines cause circuits to overload and generally give poor results.

FOR SAFETY: When servicing machine, unplug cord from wall outlet.

3. Place handle in vertical position, then tilt the machine back until hand rest on the floor. Remove the pad center lock ring. Carefully center the pad onto the pad diver and secure with the locking ring. Check for level, centering and flatness.

Note: the machine's circuit breaker may trip under conditions of excessive overload. If circuit breaker should trip, change to a less aggressive pad/brush and periodically check pad for soil build up . To reset circuit breakers switch, wait 15 seconds and press reset button located on the handle

4. Adjust handle height to a comfortable position connect the power cable.
5. Push the red safety lock button which is on the handle. And by depressing either the left or right switch levers.
6. When ready to move forward lower the machine head and pad to the floor and proceed forward, in a straight line, at a steady pace.

FOR SAFETY: When using machine, do not release handles until pad comes to a complete stop.

MACHINE MAINTENANCE

FOR SAFETY: When servicing machine, unplug cord from wall outlet.

! WARNING: Do Not Use Outdoors. Do Not Expose to Rain. Store Indoors.

Store the machine in a clean dry area. Wipe the entire machine and the cord down with a clean cloth. Wrap the machine's electrical cord onto the handles and cord hook provided CHECK the cord and plug for nicks, cuts or damage. Remove the pad or brush and clean thoroughly.

FOR SAFETY: When transporting machine, get assistance when lifting machine.

FOR SAFETY: When servicing machine, all repairs must be performed by a qualified service person.

FOR SAFETY: When servicing machine, do not modify the machine from it's original design.

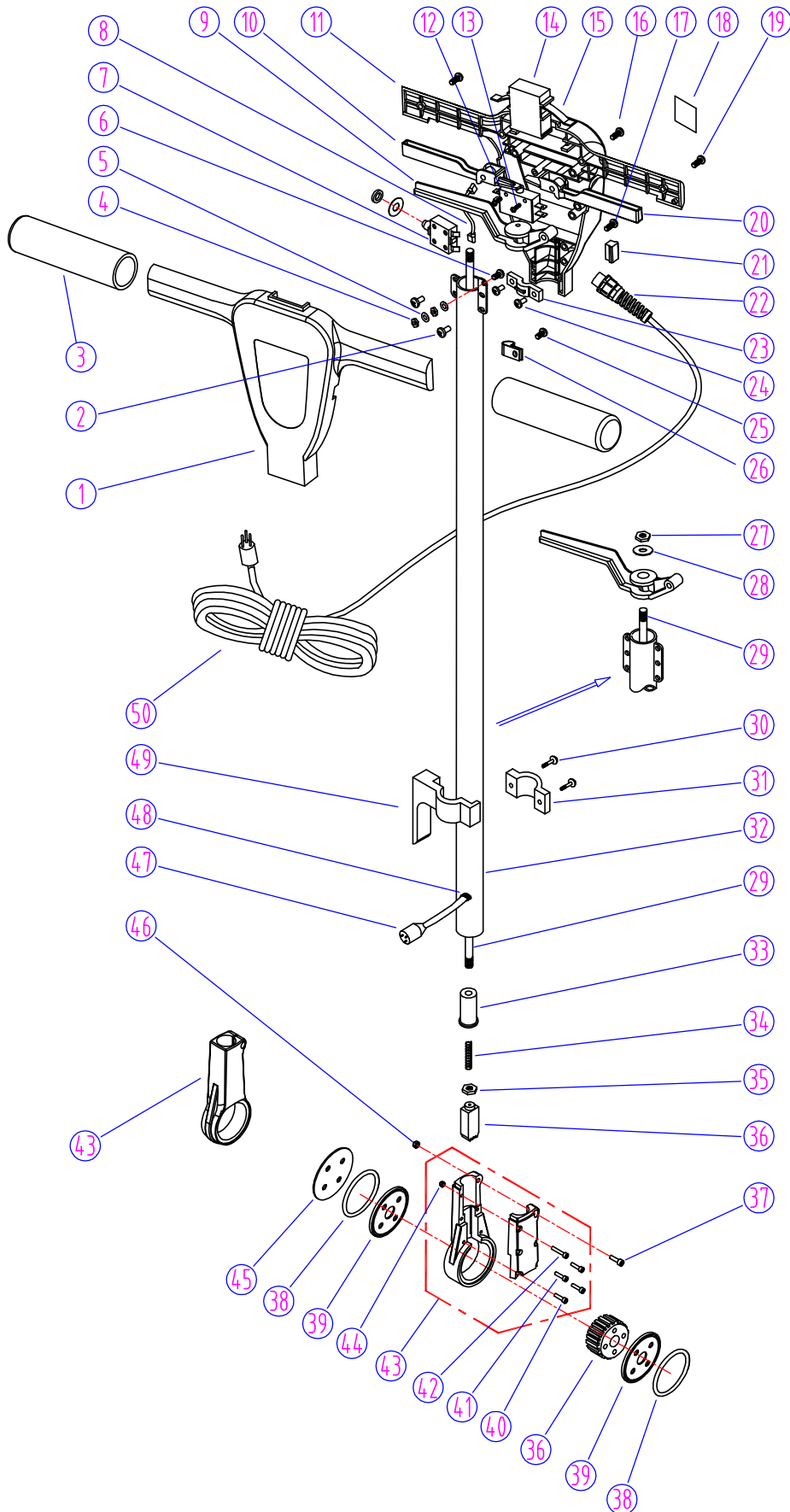
TROUBLE SHOOTING

PROBLEM	CAUSE	SOLUTION
Motor does not operate.	Building circuit breaker tripped	Reset breaker and change to different circuit.
	Faulty power cord.	Contact Service Center.
	Faulty wiring.	Contact Service Center.
	Faulty ON/OFF handle switch.	Contact Service Center.
	Faulty Motor.	Contact Service Center.
Pad spins slowly or not at all.	Machine circuit breaker tripped	Reset the circuit breaker button located on the handle
	Loose drive belt.	Tighten drive belt.
Machine circuit breaker trips continuously	Broken drive belt.	Replace drive belt.
	Heavily soiled pad .	Replace or turn over pad.
	Improper pad for application.	Change to proper pad.
	Faulty circuit breaker.	Contact Service Center.

SPECIFICATIONS

MODEL NO.	608165
MACHINE WIDTH	534 mm (21 in)
MACHINE HEIGHT	1270 mm (50 in)
MACHINE LENGTH	820 mm (32 in)
MACHINE WEIGHT	42 kg (92 lbs)
DRIVE MOTOR	120 V, 1.5 hp, 14 AMP, 60Hz
PAD SPEED	1500 RPM
POWER CORD LENGTH	15 M (50 ft)
PAD DIAMETER	510 mm (20 in)
DECIBEL RATING AT OPERATOR'S EAR, INDOORS ON TILE FLOOR	70 dB (A)

HANDLE GROUP



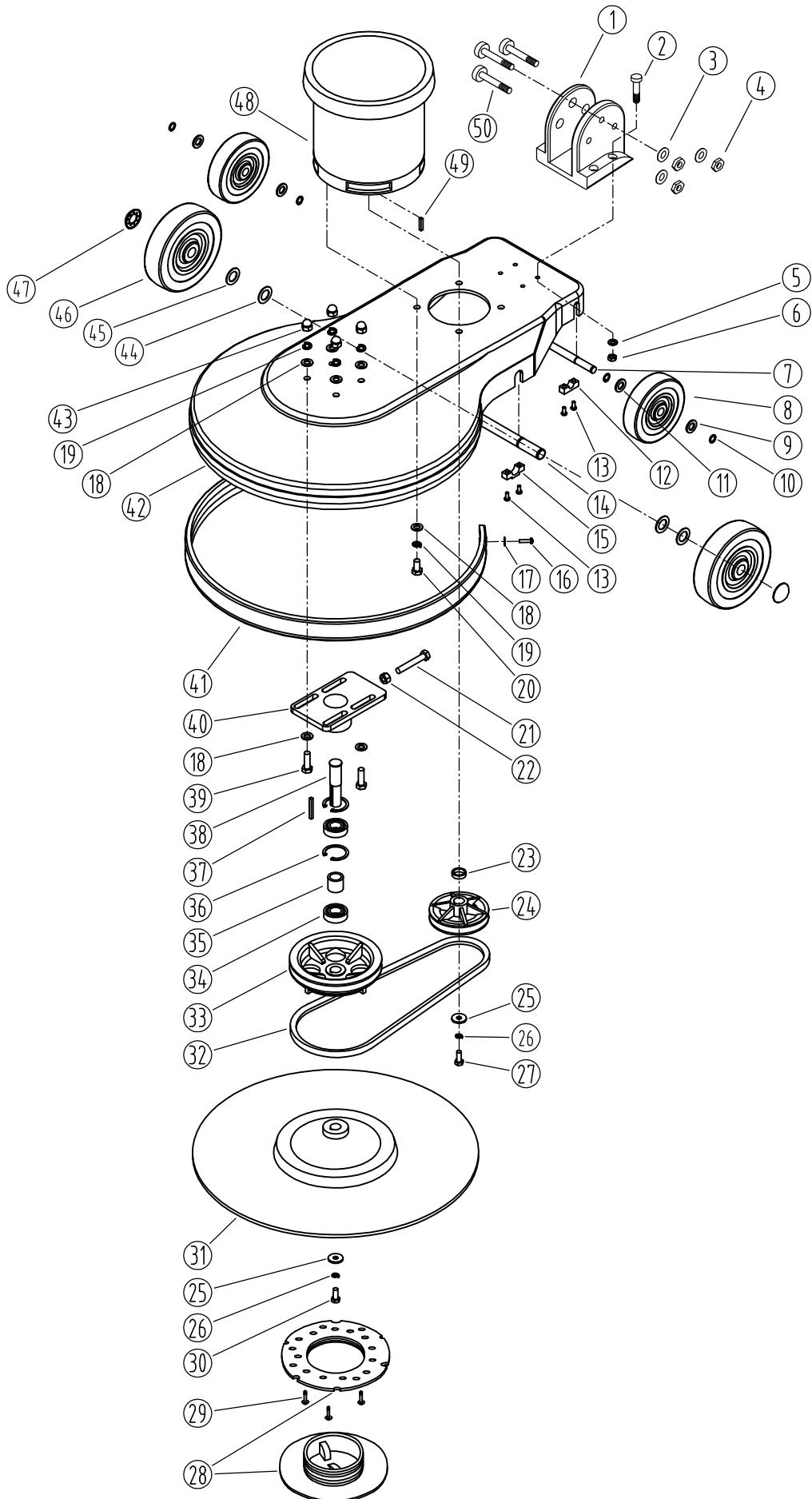
High Speed Handle Group

DIA NO	PART NUMBER	DESCRIPTION	NO REQ'D
1	613874 *	FRONT COVER,SWITCH HOUSING [metal]	1
	610042	FRONT COVER,SWITCH HOUSING [plastic][metal handle kit available-#613883]	1
2	613875	SCREW M5 x 12	3
3	613876	HANDLE GRIP	2
4	140297	NUT M5	2
5	140031	WASHER,#10 EXT ZN	2
6	575569000	HEX SCREW M5 x 16	1
7	612542	CIRCUIT BREAKER 17AMPS	1
8	613999	JUMP WIRE	1
9	613877 *	LEVELING HANDLE [metal]	1
	612386 *	LEVELING HANDLE[plastic]	1
10	613878 *	LEVELING SWITCH,RIGHT [metal]	1
	610037 *	LEVELING SWITCH,RIGHT [Plastic]	1
11	613894 *	REAR COVER,SWITCH HOUSING [metal]	1
	610043 *	REARCOVER,SWITCH HOUSING [plastic][metal handle kit available-#613883]	1
12	612866	SWITCH ASSY	1
13	613880	SCREW M3 x 25,PH	2
14	612461	BUTTON,SAFETY LOCK	1
15	612464	SPRING,SAFETY LOCK BUTTON	1
16	612459	SCREW M5 x 30 (FOR METAL HANDLES)	2
17	612865	SCREW M5 x 35 (FOR METAL HANDLES)	3
18	613286	WARNING LABEL	1
19	613895	SCREW M5 x 16,PH (FOR METAL HANDLES)	2
20	613881 *	LEVEL SWITCH,LEFT [METAL]	1
	610036 *	LEVELING SWITCH,LEFT [plastic]	1
21	612549	COVER,LEVEL,SOLUTION	1
22	612488	STRAIN RELIEF,CORD	1
23	613882	CLAMP BLOCK,CORD,HANDLE	1
24	612388	SCREW,M4 x 8,PH	2
25	612550	SCREW M5 x 10,PH	1
26	612450	CLAMP, CORD	1
27	612863	NUT M4,NYLON INSERT	1
28	612456	WASHER,PLAIN, 4 x 16	1
29	612437	ROD LEVELING	1
30	612449	SCREW M4 x 16	2
31	610038	COVER,HOOK,CABLE	1
32	612442	TUBE, HANDLE	1
33	612432	RETAINER	1
34	612430	SPRING,LEVELING	1
35	612862	NUT M4,HEX	1
36	613938	KIT, GEAR AND PLUNGER	1
37	612150	SCREW M6 x 20,HEX SOCKET	1
38	612422	"O"RING,GEAR,SEAT	2
39	612423	WASHER,NYLON	2
40	614025	SCREW,M5 x 20,HEX SOCKET	2
41	612720	SCREW,M5 x 25,HEX SOCKET	2
42	614024	SCREW,M5 x 38, HEX SOCKET	1
43	613977	ASM,GEAR SEAT REPLACEMENT (INCLUDE ITEM #36)	1
44	614023	NUT,M5,NYLON INSERT	1
45	612477	COVER,GEAR	1
46	612414	NUT M6,NYLON INSERT	1
47	612475	CORD,HANDLE,14/3C	1
48	612469	GROMMET	1
49	610039	HOOK,CABLE	1
50	612484	CABLE MAIN POWER 14/3C,STO	1

***NOTE:Plastic and metal handle replacement parts are not interchangeable.**

PARTS LIST

BASE GROUP



High Speed Base Group

DIA NO	PART NUMBER	DESCRIPTION	NO	REQ'D
1	612417	MOUNTING BASE ,GEAR		1
2	612720	SCREW,M6 x 30,HEX SOCKET		4
3	612419	WASHER,PLAIN, 8		3
4	612418	NUT,M8 x 7.5,NYLON INSERT		3
5	612415	WASHER,PLAIN, 6		4
6	612414	NUT,M6,NYLON INSERT		4
7	612721	AXLE,TRANSPORTATION		1
8	612860	WHEEL,5"		2
9	612396	WASHER,PLAIN, 12.35		2
10	612394	RETAINING RING,EXTERNAL, 12		4
11	612397	WAVING WASHER, 12		2
12	612413	CLAMP BLOCK,AXLE TRANSPORTATION		2
13	612723	SELF-TAPPING SCREW ST5 x 20,PH		8
14	612724	FRONT AXEL		1
15	612725	CLAMP BLOCK,FRONT AXLE		2
16	612411	SCREW M5 x 16,PH		2
17	612393	WASHER,PLAIN, 5 x ? 16		2
18	612726	WASHER,PLAIN, 10		12
19	612727	WASHER,LOCK, 10		8
20	612728	SCREW,16G,3/8",HEX		4
21	612729	SCREW,M10 x 65,HEX		1
22	612730	NUT,M10		1
23	612731	SPACER		1
24	612732	DRIVING PULLEY		1
25	612733	WASHER,PLAIN, 8		2
26	612406	WASHER,LOCK		2
27	612735	SCREW,18G,5/16"		1
28	612736	CENTER LOCK, PAD		1
29	612737	SELF-TAPPING SCREW ST4 x 12		3
30	612738	SCREW M8 x 20,HEX		1
31	612739	PAD HOLDER		1
32	612740	BELT		1
33	612741	DRIVEN PULLEY		1
34	612742	BEARING		2
35	612743	SPACER		1
36	612744	WASHER,LOCK		2
37	612745	KEY,DRIVEN SHAFT		1
38	612746	DRIVEN SHAFT		1
39	612747	SCREW,M10 x 32		4
40	612748	MOUNTING PLATE,DRIVEN SHAFT		1
41	612749	BUMPER ,FRAME		1
42	612750	FRAME		1
43	612751	CAP NUT,M10		4
44	613890	RETAINING RING,EXTERNAL, 9		2
45	613891	WAVING WASHER, 19		2
46	613892	WHEEL,6.4"		2
47	613893	CAP,FRONT AXLE		2
48	612752	MOTOR		1
	614029	CARBON BRUSH (SET OF 4)		1
	614030	RECTIFIER, 50A, 1000V		1
49	612753	KEY,MOTOR		1
50	612480	SCREW M8 x 60,HEX SOCKET		3

608165

