

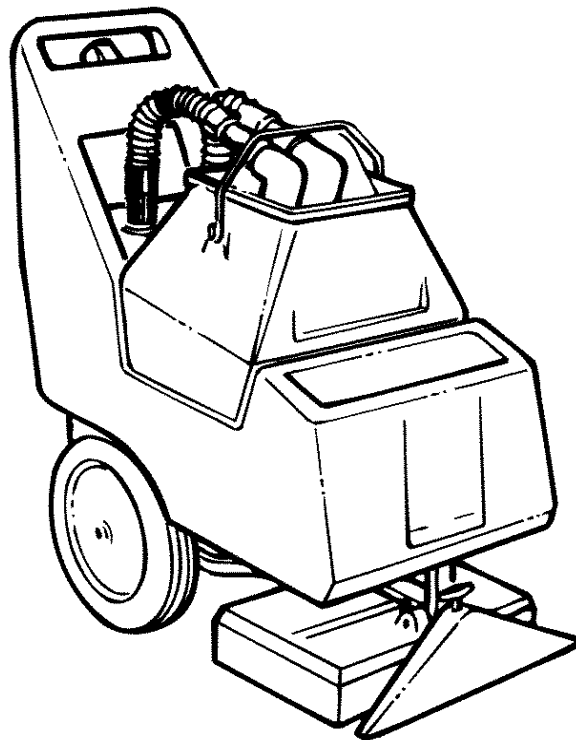
Castex®

SCX-800

Self-Contained Carpet Extractor

Model No.:
608214

Operator and Parts Manual



CASTEX INCORPORATED
12875 RANSOM STREET
HOLLAND MI 49424 U.S.A.

A TENNANT COMPANY

1-800-522-7839
616-786-2330
FAX: 1-800-678-4240
CUSTOMER SERVICE: 1-800-964-9644

608216
Rev. 01 (06-00)

OPERATION

This manual is furnished with each new model. It provides necessary operation and machine maintenance instructions and an illustrated parts list.

Read this manual completely and understand the machine before operating or servicing.

When ordering replacement parts, use the Parts List in this manual. Before ordering parts or supplies, be sure to have your machine model number and serial number handy. Parts and supplies may be ordered by phone or mail from any Authorized Service Center or Distributor.

This machine will provide excellent service. However, the best results will be obtained at minimum costs if:

- The machine is operated with reasonable care.
- The machine is maintained regularly - per the maintenance instructions provided.
- The machine is maintained with manufacturer supplied or equivalent parts.

MACHINE DATA

Please fill out at time of installation for future reference.

Model No.- _____

Install. Date - _____

Serial No.- _____

©2000 Tennant Company

Printed in U.S.A

Castex is a registered United States trademark of Tennant Company.

TABLE OF CONTENTS

SAFETY PRECAUTIONS	3
SETUP AND OPERATION	4
UPHOLSTERY CLEANING	5
MACHINE MAINTENANCE	5
RECOMMENDED STOCK ITEMS	5
TROUBLESHOOTING GUIDE	6
ELECTRICAL DIAGRAM	7
PARTS LIST	8

SAFETY PRECAUTIONS

This machine is suited to clean carpets in an indoor environment and is not constructed for any other use. Use only recommended cleaning agents.

All operators must read, understand and practice the following safety precautions:

The following safety alert symbols are used throughout this manual as indicated in their description.

⚠ WARNING: To warn of hazards or unsafe practices which could result in severe personal injury or death.

FOR SAFETY: To identify actions which must be followed for safe operation of equipment.

The following information signals potentially dangerous conditions to the operator or equipment:

FOR SAFETY:

1. **Do not operate machine:**
 - Unless trained and authorized.
 - Unless operator manual is read and understood.
 - In flammable or explosive areas unless designed for use in those areas.
 - Unless cord is properly grounded.
 - With damaged cord or plug.
 - If not in proper operating condition.
 - In outdoor areas.
 - In standing water.
2. **Before operating machine:**
 - Make sure all safety devices are in place and operate properly.
3. **When using machine:**
 - Do not run machine over cord.
 - Do not pull machine by plug or cord.
 - Do not pull cord around sharp edges or corners.
 - Do not unplug by pulling on cord.
 - Do not stretch cord.
 - Do not handle plug with wet hands.
 - Keep cord away from heated surfaces.
 - Report machine damage or faulty operation immediately.
4. **Before leaving or servicing machine:**
 - Turn off machine.
 - Unplug cord from wall outlet.

5. When servicing machine:

- Unplug cord from wall outlet.
- Avoid moving parts. Do not wear loose jackets, shirts, or sleeves.
- Use manufacturer supplied or approved replacement parts.

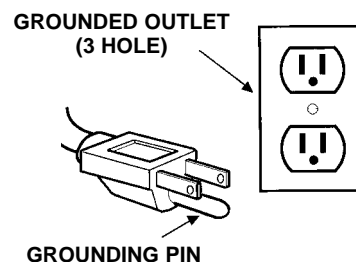
⚠ WARNING: Hazardous Voltage. Shock or electrocution can result. Always unplug machine before servicing.

⚠ WARNING: Flammable materials can cause an explosion or fire. Do not use flammable materials in tank(s).

⚠ WARNING: Flammable materials or reactive metals can cause an explosion or fire. Do not pick up.

GROUNDING INSTRUCTIONS

Machine must be grounded. If it should malfunction or breakdown, grounding provides a path of least resistance for electrical current to reduce the risk of electrical shock. This machine is equipped with a cord having an equipment-grounding conductor and grounding plug. The plug must be plugged into an appropriate outlet that is properly installed in accordance with all local codes and ordinances. Do not remove ground pin; if missing, replace plug before use.



OPERATION

SETUP AND OPERATION

FOR SAFETY: Do not use machine unless operator manual is read and understood.

1. Pour a recommended liquid cleaning agent into the solution tank, according to bottle's mixing instructions.

⚠ WARNING: Flammable materials can cause an explosion or fire. Do not use flammable materials in tank(s).

2. Using a clean bucket, fill solution tank with 30 liters (8 gal) hot water, 60°C (140°F) max. If powdered cleaning chemicals are used, mix the powders in the filling bucket. **DO NOT MIX POWDERED CHEMICALS IN THE SOLUTION TANK!** This can plug the pumping system with undissolved powder.

ATTENTION: Always use a clean bucket or hose to fill the machine. DO NOT use the recovery tank to fill the solution tank. The recovery tank will have dirt inside which will plug the solution pump system. Perfectly clean water must be in the clean water tank to avoid fouling the pump system.

3. Plug the power cord into a grounded 120 volt outlet (Figure 1).

FOR SAFETY: Do not use machine unless cord is properly grounded.

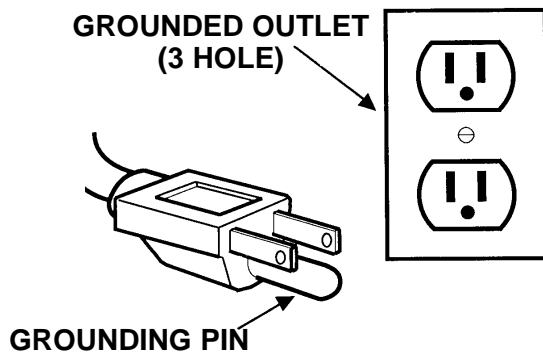


Figure 1

4. Turn the height adjustment knob (located at front of machine) to raise or lower the brush to your carpet type.
5. Turn on VACUUM switch.

6. Position the extractor at the first area to be cleaned. Press and hold the INTERMITTENT button. This starts the solution spray and brush. Pull the extractor toward you about 1219 mm (4 ft), then release the INTERMITTENT button to stop spray, but continue to pull the machine toward you for another 305 mm (1 ft). Then, push down on the handle and roll the machine forward to the next strip, overlapping about 51 mm (2 in).

⚠ WARNING: Flammable materials or reactive metals can cause an explosion or fire. Do not pick up.

NOTE: If the brush stops during operation, UNPLUG THE EXTRACTOR, dislodge any obstructions near the brush, then reset the circuit breaker button located on the back panel of the extractor.

7. While cleaning, watch the recovery tank for foam buildup. If foam does appear, pull the clear vacuum hose off the hose barb. Pour about 31 mL (2 Tbs) of defoamer into the hose barb with the vacuum motor running to draw defoamer into the tank.

ATTENTION: Foam or water will damage the vacuum motors. Always prevent foam or water from entering the screen by using defoamer. Damage due to foam or water is NOT COVERED BY WARRANTY.

8. When the recovery tank is full, turn off vacuum switch, remove clear lid, lift out recovery tank and drain. Do not use the recovery tank to fill the clean water tank. Instead, use a clean bucket or hose.
9. When you have finished cleaning, use the black hose included to vacuum out any water left in the solution tank. Empty the recovery tank and rinse it to prevent odor buildup.

UPHOLSTERY CLEANING

The machine cleans most fabrics like Herculon and synthetic velvets with excellent results. Extraction is not recommended for most cottons, silks, wools or natural fiber velvets. Check the cleaning instructions sewn on the furniture by the manufacturer for further instructions. Extra caution should be taken with furniture that has been re-upholstered. Any material under the new upholstery may bleed and discolor the new fabric.

1. Vacuum the upholstery before cleaning.
2. **TEST THE FABRIC FOR COLORFASTNESS.** Pour a small amount of cleaning solution on a white cloth. Hold the damp cloth against an area of upholstery which is hidden from view. Hold it there for 60 seconds. If no color transfers to the cloth, it should be safe to clean. However, always clean at your own discretion.
3. Remove the clear vacuum hose from the recovery tank lid.
4. Connect the extension vacuum hose to the recovery tank lid and to the hand tool.
5. Connect the accessory solution hose to the upholstery connection and to the hand tool.
6. Turn on the VACUUM switch.
7. Clean with the hand tool using as little cleaning solution as possible. Overlap your strokes to avoid streaking. Go over clean areas using only the vacuum to get fabric as dry as possible.

⚠ WARNING: Flammable materials or reactive metals can cause an explosion or fire. Do not pick up.

8. When you are finished, turn off the VACUUM switch. Use the extension vacuum hose to vacuum out any water left in the clean water tank.
9. Drain the recovery tank, and disconnect the vacuum and solution hoses.

ATTENTION: The solution hose contains pressurized cleaning solution which can spray when the hose is disconnected. Relieve pressure before disconnecting the hose by squeezing the Hand Tool trigger for five seconds AFTER unplugging the machine.

10. Rinse the recovery tank and the clear dome thoroughly to prevent odor buildup inside the tank.

MACHINE MAINTENANCE

To keep your extractor in top condition, perform these preventive steps.

FOR SAFETY: Before leaving or servicing machine, turn off machine and unplug cord from wall outlet.

1. Remove carpet strands and clogging debris from the brush after every use.
2. Thoroughly rinse the recovery tank and the clear cover after every use.
3. Clean the solution tank screen and vacuum screen after every use.
4. Every forty hours of operation, run a mild acid (anti-browning chemical) through the pump system to dissolve normal alkaline chemical buildup. Pour the anti-browning chemical in the solution tank with about three gallons of warm water.

Hold a bucket under the spray jets to catch spray and push the INTERMITTENT PUMP button just until the solution begins to spray through the tips. Allow the solution to remain in the system overnight in above freezing temperatures.

In the morning, drain the solution then run 11.3L (3 gal) of clean water through the system to flush out impurities.

ATTENTION: DO NOT ALLOW THE EXTRACTOR TO FREEZE WITH WATER IN THE PUMPING SYSTEM. This can crack the pump and damage is not covered by warranty. To avoid pump damage, always run the pump dry before exposing extractor to freezing temperatures.

RECOMMENDED STOCK ITEMS

Refer to Parts List section for recommended stock items. Stock Items are clearly identified with a bullet preceding the parts description. See example below:

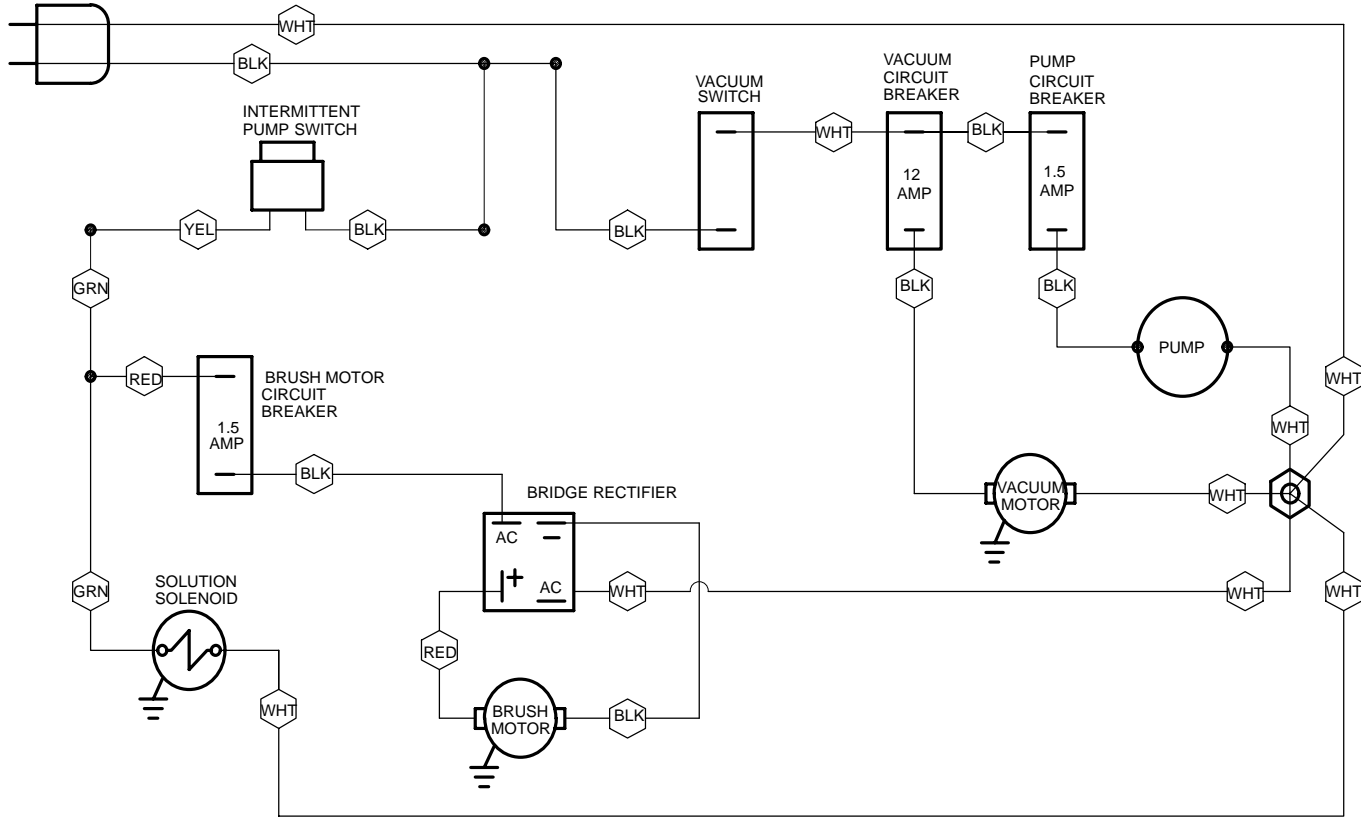
Ref.	Part No.	Description	Qty.
1	201183	*3M STAINLESS	1
2	168513	*FLCAT, BRUSH	1
3	258187	*NAPLE	1
4	101714	*GABRET	1
5	218243	*NUT, FLANGED	1

OPERATION

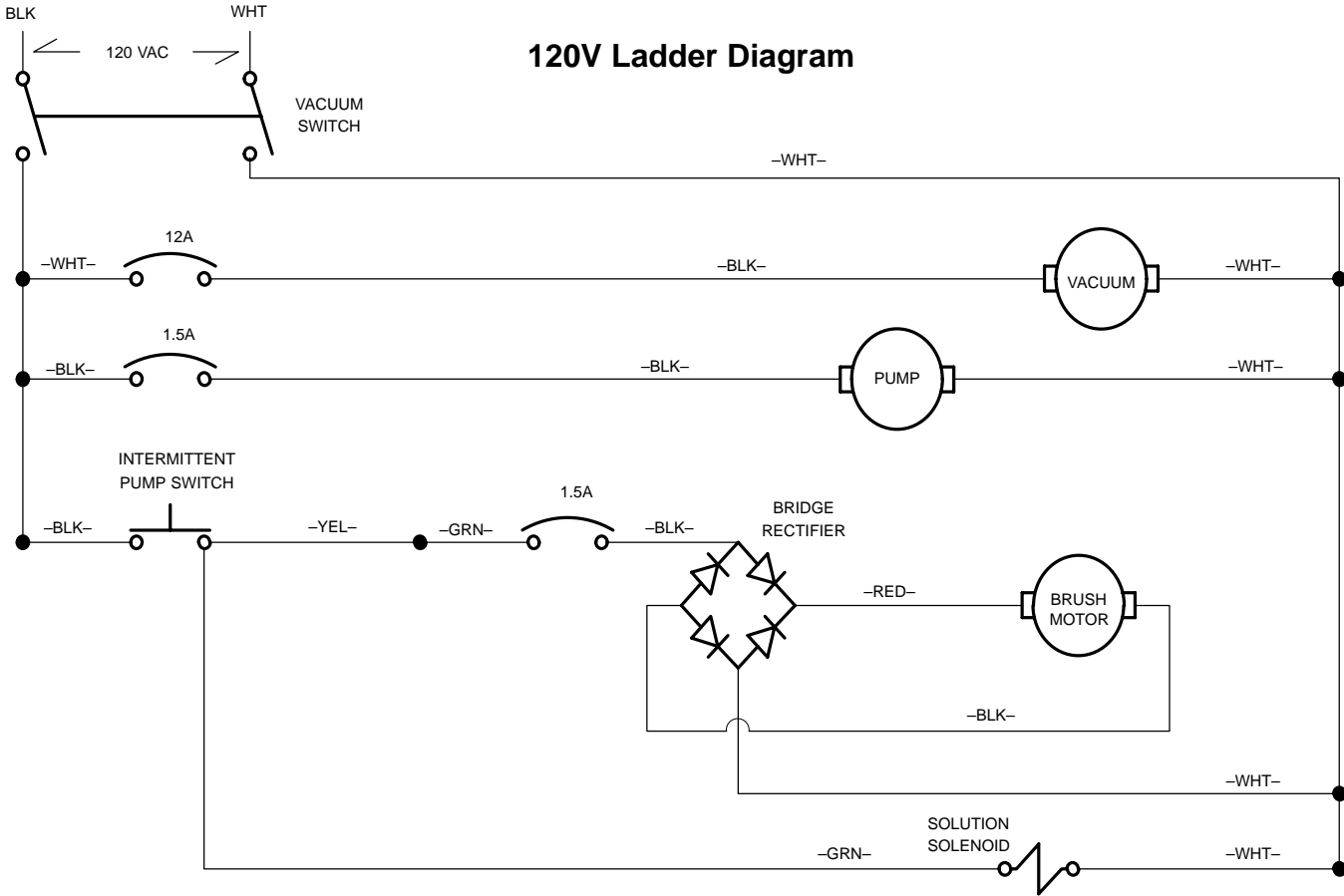
TROUBLESHOOTING GUIDE

PROBLEM	CAUSE	SOLUTION
Vacuum motor will not operate.	Fuse blown or circuit breaker tripped in building.	Replace fuse or reset breaker.
	Faulty VACUUM switch.	Contact Service Center.
	Loose or broken wiring.	Contact Service Center.
Poor pick-up.	Vacuum hose is loose from floor tool.	Slide hose cuff firmly onto the floor tool.
	Hose cuffs are loose on hoses.	Turn the cuffs while holding hose to tighten cuffs onto the hose.
	Holes in hoses.	Replace hose or hoses.
	Hoses are not firmly attached onto hose barbs.	Slide the hose cuffs firmly onto the hose barbs.
	Gaskets worn.	Replace the worn gasket.
	Hose clamp(s) loose.	Tighten clamp(s).
	Vacuum motor loose.	Tighten nut(s).
	Faulty vacuum motor.	Contact Service Center.
Little or no spray from spray tips.	Plugged screen in solution tank.	Clean screen or replace.
	Plugged spray tips in power brush base.	Remove tips and clean in mild acid solution or replace.
	Faulty solution pump.	Contact Service Center.
	Faulty solenoid.	Contact Service Center.
	One of the internal hoses is pinched.	Move hose to remove the pinch. Replace hose if damaged.
Brush does not operate.	Faulty Intermittent pump switch.	Contact Service Center.
	Carpet strands or other debris have clogged the brush and tripped the circuit breaker (located on the back panel).	UNPLUG THE MACHINE. Remove all clogging material from the brush, then push the circuit breaker button to reset it.
	Brush drive belt is loose or broken.	If belt is loose, loosen both locknuts on the drive motor. Pivot the motor away from the brush until the belt is taut and tighten the nuts again to lock the motor in position.
	Brush pulley, or motor pulley is loose and spinning on its shaft.	Examine the loose pulley and the shaft carefully for damage. If there is no damage to either, tighten the set screw.
	Faulty brush motor.	Contact Service Center.
	Loose wiring.	Contact Service Center.

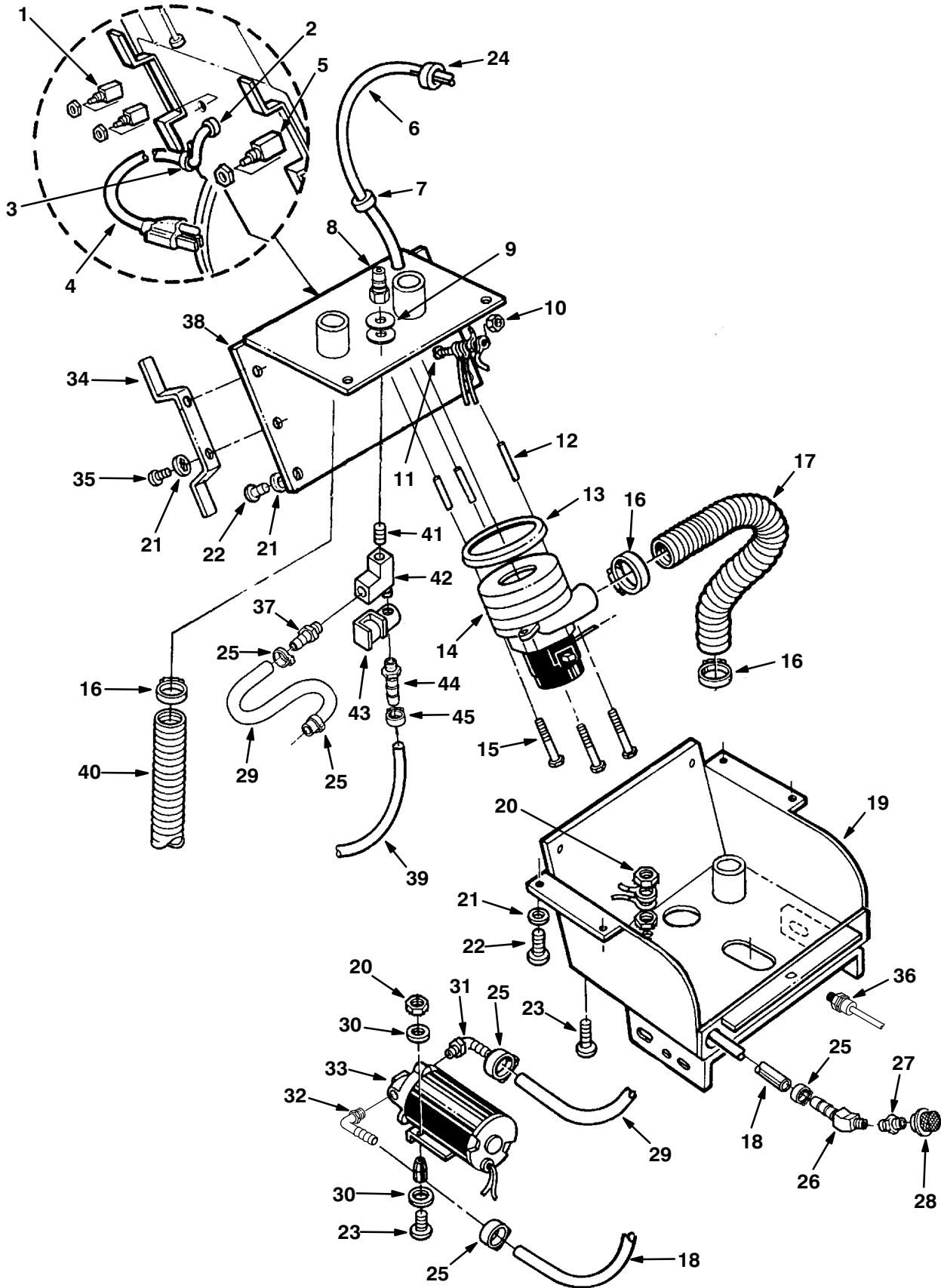
120V Wiring Diagram



120V Ladder Diagram



CHASSIS ASSEMBLY



CHASSIS ASSEMBLY

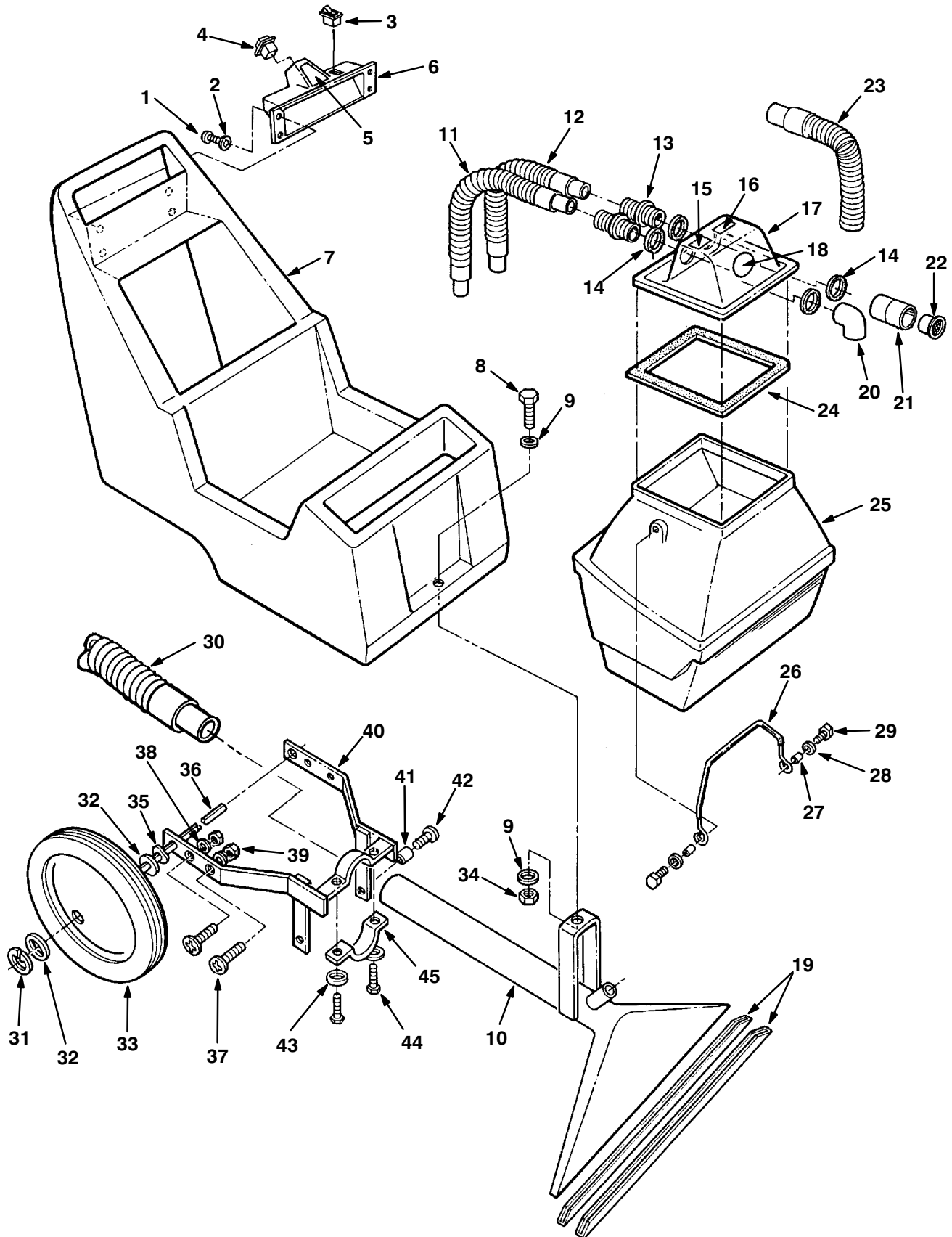
REF	PART #	DESCRIPTION	QTY.
1	578337000	●CIRCUIT BREAKER, 1.5A	2
2	28305	●RELIEF, STRAIN	1
3	28729	●TUBE, CLAMP	1
4	28683	CORD ASSY. 14/3 X 50' YELLOW	1
5	130670	●BREAKER, CIRCUIT 12 AMP	1
6	130665	CORD, 18/3 X 40" BK	1
7	28305	RELIEF, STRAIN	1
8	150933	FITTING, 1/4F QD PLUG BRASS	1
9	130034	WASHER	2
10	140519	NUT, KEP 10 24	1
11	140018	WASHER, INTERNAL LOCK TOOTH #10	1
12	604475	SPACER, MOTOR SUPPORT	3
13	0174..10	●EAT, NEOPRENE MOTOR	1
14	130416	●MOTOR, VACUUM 5.7 DIA 2 STG. 120V	1
	190160	●BRUSH, CARBON (2/Pk)	2
15	2998.28	SCREW, 1/4 20 X 3 1/2	3
16	140308	CLAMP, HOSE 3/4 TO 1 3/4 DIA	3
17	606160	HOSE, 2" X 24" EXHAUST	1
18	606163	HOSE 3/8 X 22" GREY	1
19	604494	CHASSIS	1
20	140519	NUT, KEP 10 24	4
21	140018	WASHER, INTERNAL LOCK TOOTH #10	16
22	140892	SCREW, MACHINE 10 24 X 1/2	12
23	140895	SCREW, MACHINE 10 24 X 3/4	3
24	14865	RELIEF, STRAIN	1

REF	PART #	DESCRIPTION	QTY.
25	140310	CLAMP, HOSE 5/16 TO 7/8 DIA	3
26	28303	HOSE, BARB	1
27	150606	NIPPLE, BRASS HEX 1/4 MPT X 1/4 MPT	1
28	180628	●SCREEN, CLEAN WATER TANK	1
29	606162	HOSE, 1/2 X 26" RED	1
30	140012	WASHER, FLAT 3/16	2
31	150425	FITTING, 3/8M X 1/2H ELBOW 90	1
32	150412	FITTING, 3/8M X 3/8H ELBOW 90	1
33	180103	●PUMP, 100 PSI 120V	1
34	604466	HOOK, CORD	2
35	140895	SCREW, #10 24 X 3/4"	4
36	130194	RELIEF, STRAIN	1
37	150517	FITTING, 1/4M X 1/2H BARB BRASS	1
38	604463	ENCLOSURE, VACUUM MOTOR	1
39	606161	HOSE, 1/4 X 36" GRAY	1
40	160462	HOSE, VAC 1.50 X 33" WHITE	1
41	150615	FITTING, 1/4M NIPPLE CLOSE BRASS	1
42	150709	TEE, STRT 1/4F X 1/4F X 1/4M BRASS	1
43	210033	●VALVE, SOLENOID 120V 60 HZ	1
44	150515	FITTING 1/4M X 1/4H BARB BRASS	1
45	140325	CLAMP, EAR 1/2"	2
N/S	120619	DECAL, "WARNING, EXTRACTORS"	1

●RECOMMENDED STOCK ITEMS

N/S= NOT SHOWN

TANK ASSEMBLY



TANK ASSEMBLY

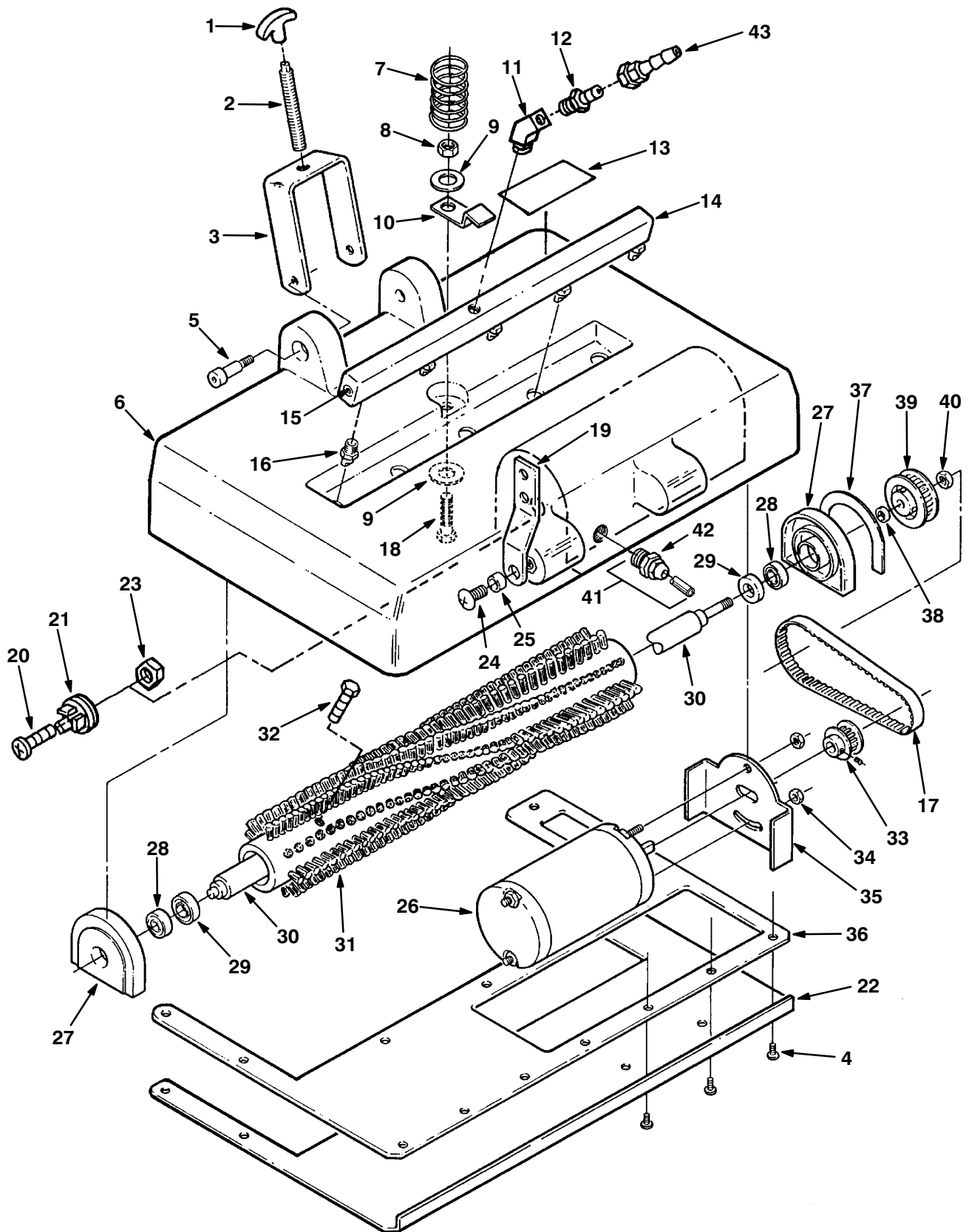
REF	PART #	DESCRIPTION	QTY.
1	140892	SCREW, MACHINE 10 24 X 1/2	4
2	140018	WASHER, INTERNAL LOCK TOOTH #10	4
3	130717	●SWITCH, ROCKER ON/OFF 120/220 VOLT	1
4	28228	●SWITCH	1
5	28318	DECAL, "INTERMITTENT PUMP SWITCH"	1
6	604468	ENCLOSURE, SWITCH	1
7	602689	TANK, SOLUTION, BLUE	1
8	140256	SCREW, 3/8 16 X 2 1/2	1
9	140028	WASHER, FLAT 3/8	2
10	230637	TOOL, FLOOR 20" BLACK	1
11	28358	HOSE, 17" CLEAR WHITE W/1 1/2 CUFFS	1
12	28231	HOSE, 17"	1
13	25202	HOSE BARB	2
14	210234	GASKET, DRAIN VALVE	4
15	28387	DECAL, "ACCESSORY TOOL"	1
16	120906	DECAL, "IMPORTANT DRAIN"	1
17	602819	●COVER, RECOVERY TANK	1
18	120399	DECAL, "DO NOT ALLOW FOAM"	1
19	200825	●HOE, STAINLESS STEEL 20"	2
20	19006	ELBOW, 90°	1
21	28599	ADAPTER, REWORK	1
22	25203	●SCREEN	1
23	160404	HOSE, VACUUM 1 1/2 X 5' W/1 CUFF	1
24	102538	●GASKET, BLACK 1/2" WIDE X 3/16" THICK	3'
25	602684	RECOVERY TANK BLUE W/CUTOUT	1

REF	PART #	DESCRIPTION	QTY.
26	28279	HANDLE , WITH BK. PVC DIP	1
27	28277	SPACER	2
28	140003	WASHER, 1/4" X 1"	2
29	140554	SCREW, 1/4 20 X 3/4	2
30	160462	HOSE, VAC 1.50 X 33" WHITE	1
31	28230	RING, RETAINING	2
32	3148.816	WASHER, FLAT STEEL	4
33	103009	WHEEL, 12"X1.75 HUB NON MARKING	2
34	140515	NUT, 3/8 16	1
35	4252	WASHER, COMPRESSION ZINC	2
36	28114	AXLE, WHEEL ZINC	1
37	28337	SCREW, 5/16 18 X 1"	4
38	14880.4	WASHER, FLAT	4
39	140546	NUT, LOCK 5/16 18	4
40	230635	BRACKET, MOUNTING BRUSH BASE	1
41	140914	SPACER	2
42	140898	SCREW, 3/8 16 X 3/4	2
43	140016	WASHER, LOCK 1/4"	2
44	140554	SCREW, 1/4 20	2
45	140313	CLAMP, FLOOR TOOL	1
N/S	120101	DECAL, CASTEX LOGO	1
N/S	608215	DECAL, SCX-800	2

●RECOMMENDED STOCK ITEMS

N/S NOT SHOWN

POWER BRUSH BASE ASSEMBLY



POWER BRUSH BASE ASSEMBLY

REF	PART #	DESCRIPTION	QTY.
1	240194	●KNOB, HEIGHT ADJ.	1
2	230258	●STUD, THREADED	1
3	230638.BK	BRACKET, HEIGHT ADJ.	1
4	140887	SCREW, 10 24 X 3/8	12
5	140564	BOLT, 3/8 X 3/4	2
6	602690	BASE, 20", BLUE	1
7	140407	SPRING, .845	1
8	140515	NUT, 3/8 16	1
9	140036	WASHER, FLAT 3/8	2
10	230264.BK	CLAMP, BLACK	1
11	150422	ELBOW, 45°	1
12	150616	ADAPTER, BRASS	1
13	120617	DECAL, "HEIGHT ADJUSTMENT"	1
14	230379	●MANIFOLD, SPRAYBAR 20"	1
15	150208	●LUG, BRASS HEX HEAD 1/8	3
16	▽201011	●ASM., SPRAYTIP	5
	▲201013	●TIP, FITTING	5
	▲201015	●SEAL, SPRAY NOZZLE	5
17	230507	●BELT, BRUSH DRIVE	1
18	140233	SCREW, 3/8 16 X 1 3/4	1
19	230635	BRACKET, BRUSH ASSY.	1
20	140829	SCREW, 6/32 X 5/8	1
21	130304	●RECTIFIER	1

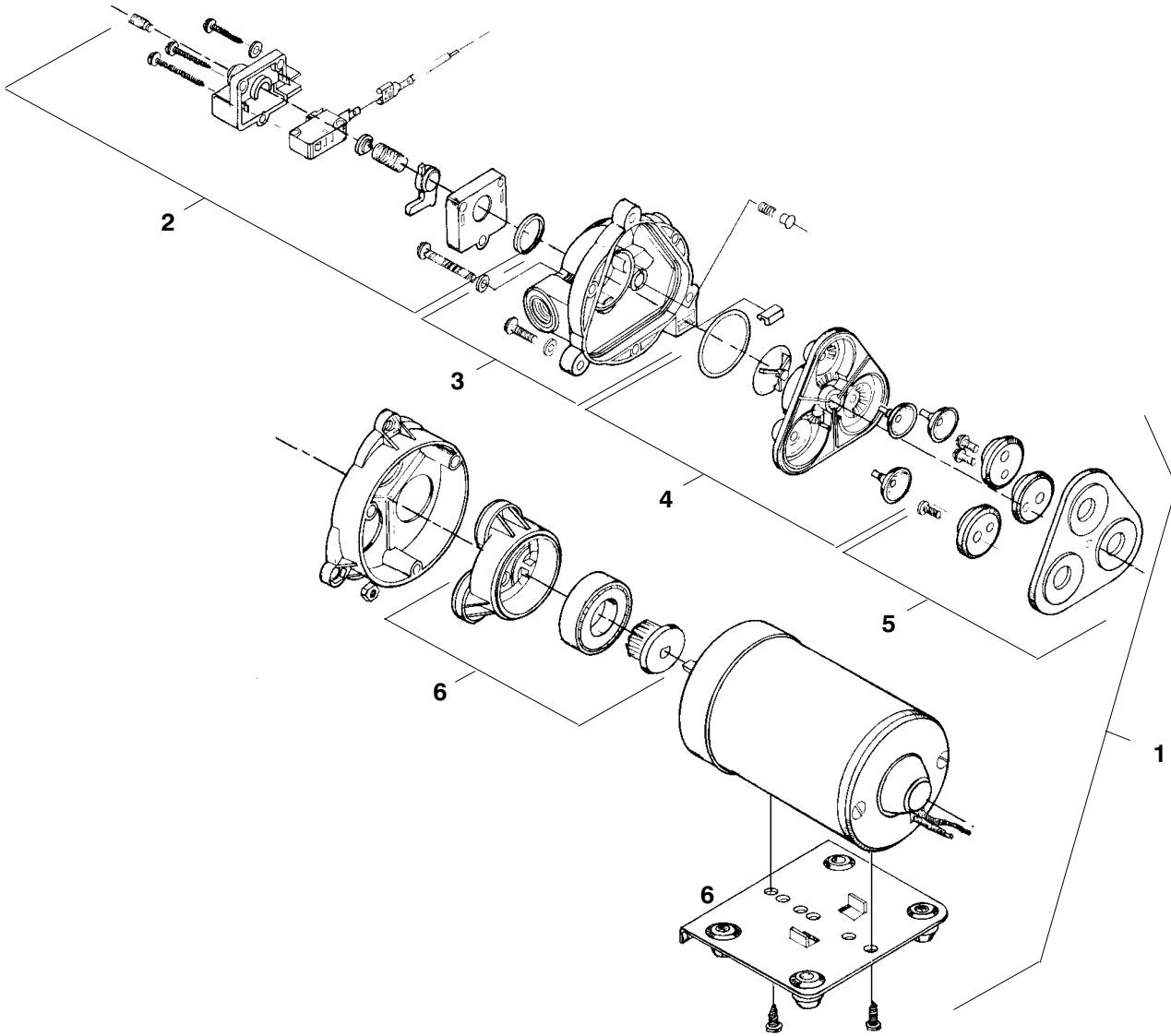
REF	PART #	DESCRIPTION	QTY.
22	230367.BK	PLATE, BRUSH BASE 20" BLACK	1
23	140539	NUT, 6-32	1
24	140898	SCREW, 3/8 16 X 3/4	2
25	140914	SPACER	2
26	130471	●MOTOR, BRUSH DRIVE 120 VOLT	1
27	230261	●BLOCK, BEARING	2
28	140125	●BEARING, BRUSH	2
29	100049	●SEAL, BRUSH BEARING	2
30	230362	SHAFT, BRUSH 20"	1
31	240050	BRUSH, CYLINDER	1
32	140554	SCREW, 1/4 20 X 3/4	4
33	230506	●PULLEY, MOTOR W/SCREW	1
34	140518	NUT, KEP 10 32	2
35	230366	PLATE, MOTOR MOUNT	1
36	100115	GASKET, 20" POWER BRUSH BASE	1
37	100005	●GASKET, BEARING BLOCK	1
38	230363	SPACER	1
39	230505	●PULLEY, BRUSH W/SCREWS	1
40	140548	NUT, 5/16	1
41	▽130662	CORD, 18/3 X 24" BLACK, ASM.	1
42	▲130165	CORD GRIP	1
43	150933	FITTING 1/4F QD PLUG BRASS SER60	1

▽ ASSEMBLY

▲ INCLUDED IN ASSEMBLY

● RECOMMENDED STOCK ITEMS

PUMP ASSEMBLY



REF	PART #	DESCRIPTION	QTY.
1	180103	● PUMP, SOLUTION ASM., 120V	1
	180109	PUMP, SOLUTION ASM., 230 V	1
2	190129	● KIT, PRESSURE SWITCH	1
	190172	● KIT PRESSURE SWITCH (VITON)	1
	190134	● KIT, DIAPHRAGM ONLY	1
3	190128	KIT, UPPER PUMP HOUSING	1
	190124	KIT, CHECK VALVE ONLY	1

REF	PART #	DESCRIPTION	QTY.
4	190171	● KIT, VALVE (VITON)	1
5	190131	KIT, SERVICE	1
6	190130	KIT, LOWER PUMP HOUSING	1

● RECOMMENDED STOCK ITEMS