

TORNADO INDUSTRIES  
7401 W. LAWRENCE AVENUE  
CHICAGO, IL 60706  
(708) 867-5100 FAX (708) 867-6968  
www.tornadovac.com



## Parts List Manual

For Commercial Use Only



## Taskforce™ 1200 & 1700 Wet/Dry Vacuums

### MODEL NOS.

94220 & 94221 (12 Gallon)

94225 & 94226 (17 Gallon)

94224 (17 Gallon with Trot-Mop)

For Operations & Maintenance see L2756FD

Effective 3/13/2006

## NOTES

*This parts book covers:*

CATALOG NO.	94220	94224	94225	94221	94226
SERIES	D	A	D	D	D
H.P./CFM	1.3 / 112	1.6 / 119	1.6 / 119	1.5 / 112	1.5 / 112
CAPACITY	12	17	17	12	17
RECOVERY	8.8	13.8	13.8	8.8	13.8
WATERLIFT	93"	96"	96"	87"	87"
MOTOR TYPE	115V 2-STAGE BYPASS	115V 2-STAGE BYPASS	115V 2-STAGE BYPASS	230V 2-STAGE BYPASS	230V 2-STAGE BYPASS
POWER CORD	25 FT. GFCI	25 FT. GFCI	25 FT. GFCI	25 FT. GFCI	25 FT. GFCI
DIMENSIONS	18"L x 17"W x 26"H	18"L x 17"W x 26"H	18"L x 17"W x 26"H	18"L x 17"W x 26"H	18"L x 17"W x 26"H
MODEL FEATURES	WET/DRY	TROT-MOP	WET/DRY	WET/DRY	WET/DRY
CERTIFICATION	ETL*	ETL*	ETL*		



**ALL SPECIFICATIONS SUBJECT TO CHANGE WITHOUT NOTICE.**

**TABLE OF CONTENTS:**

Machine Components ..... 7  
 Spare Parts 12 Gallon Units ..... 12  
 Spare Parts 17 Gallon Units ..... 14  
 Squeegee Assembly, 17 Gallon Units ..... 18  
 Wiring Diagram ..... 19

Long-term buyer protection warranties

<b>Tornado® Standard Warranty Program*</b>	
<p>Warranties do not cover components subject to normal wear or abuse and misuse, and have other limitations not specified here. For full details, contact your Authorized Tornado Distributor, Service Center, or the Tornado Technical Service Department.</p> <p>Tornado sales and service representatives are not authorized to waive or alter the terms of this warranty, or to increase the obligations of Tornado under the warranty.</p>	<p><b>10 Years:</b> <i>All plastic tanks and rotationally-molded bodies</i></p>
	<p><b>2 Year:</b> <i>Parts on all Tornado and Tornado/Karcher cleaning equipment</i></p>
	<p><b>1 Year:</b> <i>Labor on all Tornado and Tornado/Karcher cleaning equipment</i></p>
	<p><b>1 Year:</b> <i>Warranty on batteries and chargers, one year</i> All battery warranties are handled by the battery manufacturer, please call customer service for more information.</p>

Thank you for choosing Tornado products. We are proud to offer the most complete line of commercial and industrial cleaning equipment in the industry. Our reputation for quality, innovation and durability is unsurpassed.

\* Effective January 1<sup>st</sup>, 2005. Terms subject to change without notice.

- 1) Windshear™ Blower-Dryer, Insulation Blowers, T191, T201, T12/1, CV 30, CV 38, CW 50, CW 100, Pro PAC Vacs, Duo-Upright Carpetkeepers™, Gas & Electric Pressure Washers, and all chargers are warranted for 1 (one) year for both parts and labor.
- 2) Warranties on the EB30 are 90 days (batteries, charger, parts, accessories)
- 3) Warranties on all riding sweepers including the ICC1, KM 100/100 R, KMR 1250, and KMR 1700 are 24 months parts/6 months labor OR 1000 hours of operation, whichever comes first. Warranties on the 75/140 & 90/140 are 24 months parts/12 months' labor OR 1,000 hours of operation whichever comes first.
- 4) All non-wear item parts purchased after warranty expiration are warranted for 90 days.
- 5) Warranty starts from the date of sale to the consumer or, at Tornado's discretion, 6 months after dealer purchased the unit from Tornado, whichever comes first.

Note: Tornado, The Latest Dirt, Floorkeeper, Carpetkeeper, Carpetrinser, Carpetrinser/Dryer, Headmaster, Taskforce, PAC-VAC, T-Lite, Glazer, Windshear, Max-Vac, CV 30, CV 38, and Trot-Mop are trademarks of Tornado Industries.

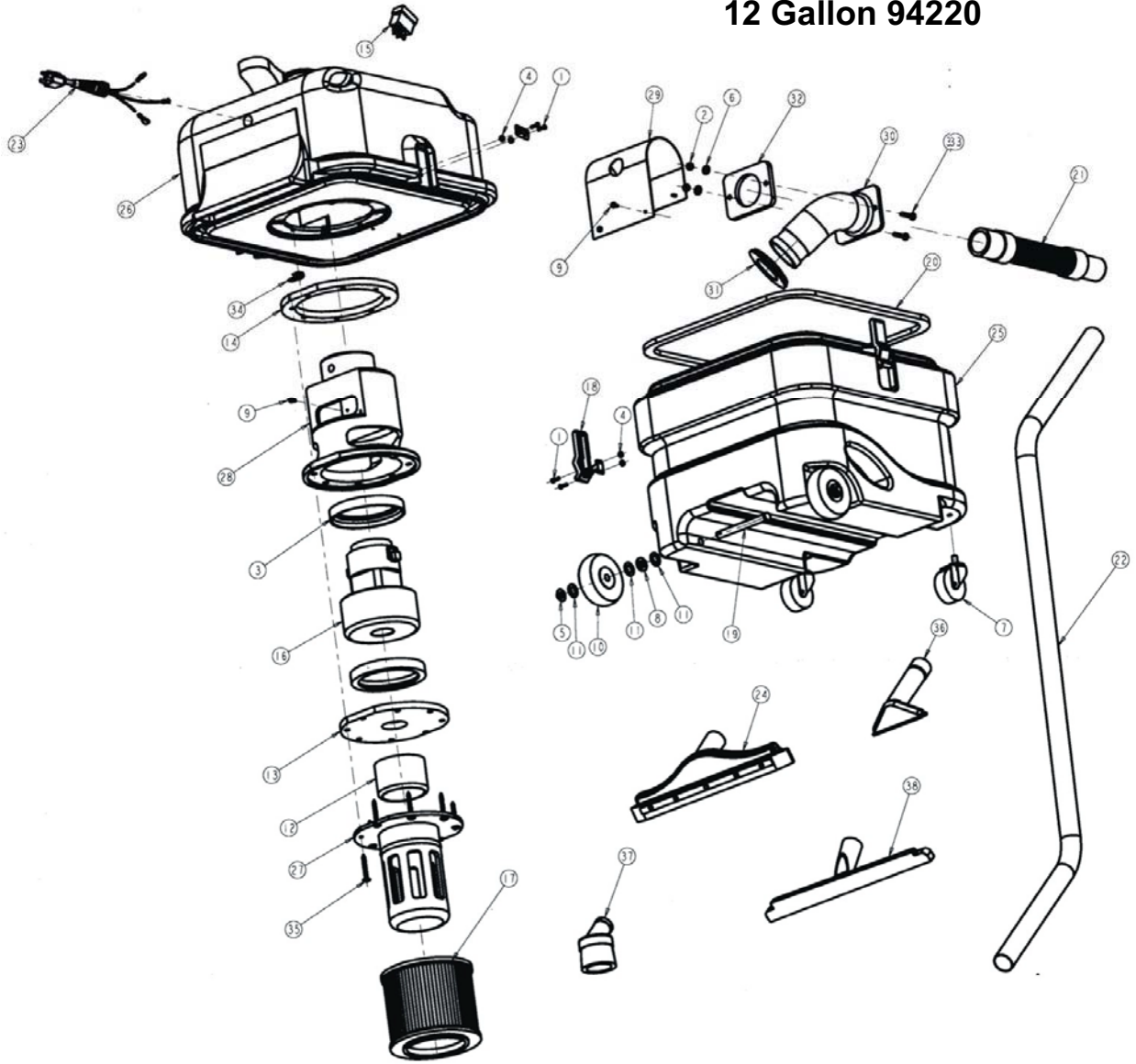
1-800-VACUUMS  
Chicago area: (708) 867-5100  
Fax: (708) 867-6968  
7401 W. Lawrence Avenue  
Chicago, IL 60706

## Machine Components



<b>ITEM #</b>	<b>DESCRIPTION</b>	<b>PART #</b>
1	VAC HEAD	-
2	CANISTER	-
3	10' FLEXIBLE HOSE	30257
4	BARE FLOOR TOOL	90714
5	14" SQUEEGEE FLOOR TOOL	30486
6	UPHOLSTERY TOOL	90711
7	ROUND BRUSH TOOL	90712
8	2-PIECE EXTENSION WAND	30258
9	CLOTH BAG (Not supplied w/machine)	19816
10	PAPER BAG (Not supplied w/machine)	90701

# Exploded View 12 Gallon 94220

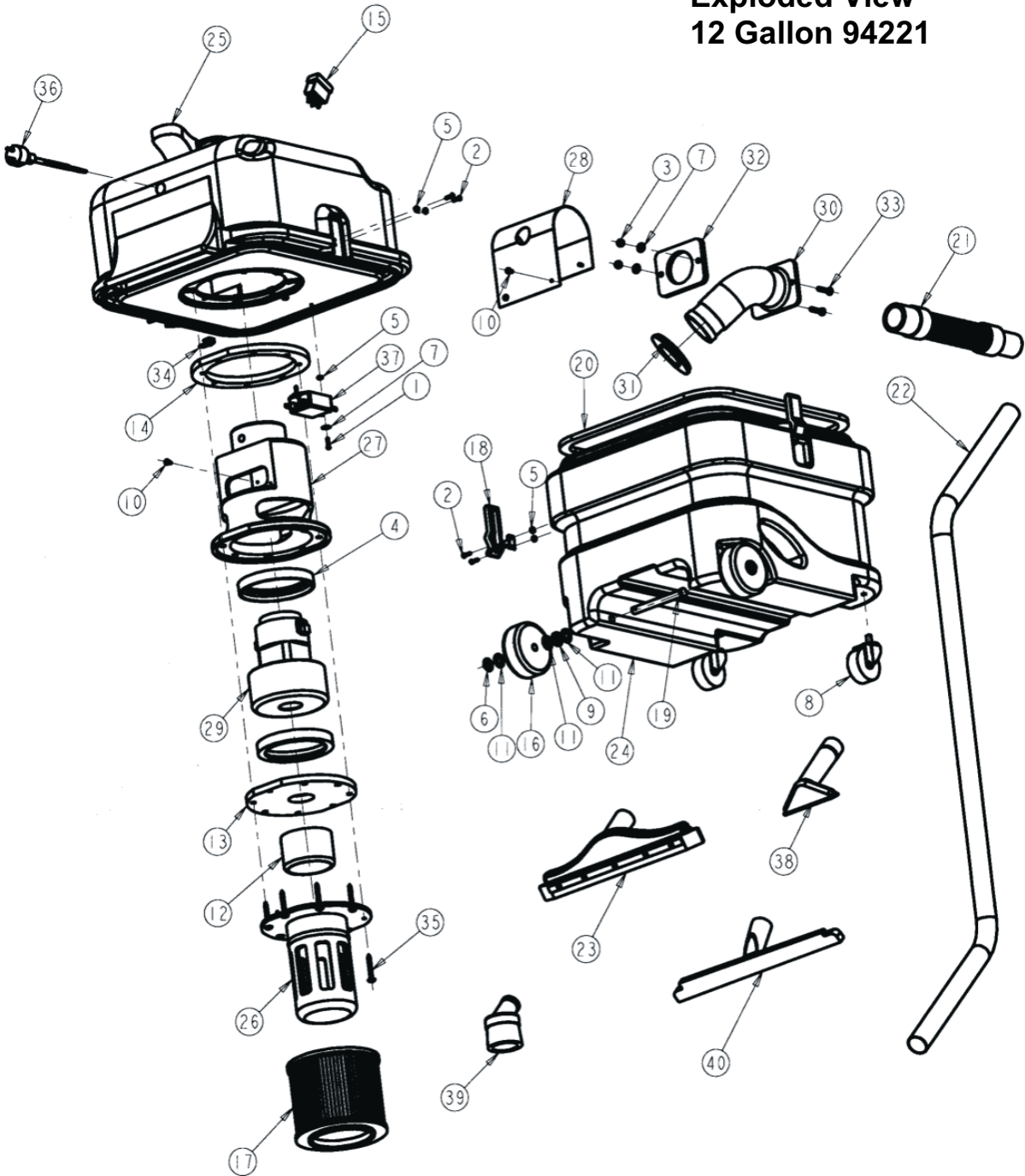


## Parts List 12 Gallon 94220

BILL OF MATERIALS			
ITEM	QTY	PART NO.	DESCRIPTION
1	8	01451	SCREW-PHILLIPS PAN HEAD MACHINE #8-32 X 5/8
2	2	01497	NUT-FINISHED HEX 1/4-20
3	2	02941	GASKET-MOTOR
4	8	02956	NUT-HEX LOCK (KEPS) #8-32
5	2	07539	NUT-PUSH 1/2
6	2	07741	WASHER-SEALING 1/4
7	2	10669	CASTER-SWIVEL
8	2	12554	WASHER-PLAIN 1/2
9	5	13330	SCREW-TFT (A) PAN HD #10-12X3/8" LG.
10	2	14817	WHEEL, 4 X 1-1/4
11	6	19616	WASHER-PLAIN .563
12	1	30234	FLOAT
13	1	30239	GASKET, MOTOR NO ADHESIVE
14	1	30240	GASKET, MOTOR W/ ADHESIVE
15	1	30241	SWITCH-ROCKER ON/OFF
16	1	30242	MOTOR-VACUUM, 1.3 HP 115V
17	1	30244	FILTER-CELLULOSE, PLASTIC
18	2	30245	LATCH-PLASTIC
19	2	30248	PIN,CLEVIS 1/2 X 4-3/4" LG.
20	1	30255	GASKET, MAIN COVER W/ADHESIVE
21	1	30257	HOSE-POLY 1-1/2" X10' LG.
22	1	30258	WAND-ALUMINUM (2 PIECE) 54"
23	1	30482	ASS'Y POWER CORD, 115V 25' LG.
24	1	30486	ASS'Y-SQUEEGEE 14"
25	1	30625	12 GALLON BASE
26	1	30631	TOP COVER
27	1	30633	FLOAT CAGE
28	1	30635	HOUSING VAC MOTOR
29	1	30706	SHROUD MOTOR
30	1	30804	ELBOW-TANK
31	1	30824	GROMMET 2" I.D.
32	1	30825	GASKET
33	2	30826	SCREW-PHILLIPS PAN HEAD MACHINE 1/4-20 X 1-1/4
34	8	30911	CLIP-TOP COVER
35	8	30919	SCREW-FORMING TRUSS HD #14X1.50 LG.
36	1	90711	TOOL UPHOLSTERY (1-1/2")
37	1	90712	TOOL-DUSTING ROUND (1-1/2")
38	1	90714	TOOL-BARE FLOOR (1-1/2")
38	2	19290	FEMALE CONNECTORS-MOTOR
39	1	30817	DECAL "TORNADO" LOGO
40	1	19364	DECAL "WARNING LABEL"

\* ITEM NOT SHOWN

# Exploded View 12 Gallon 94221

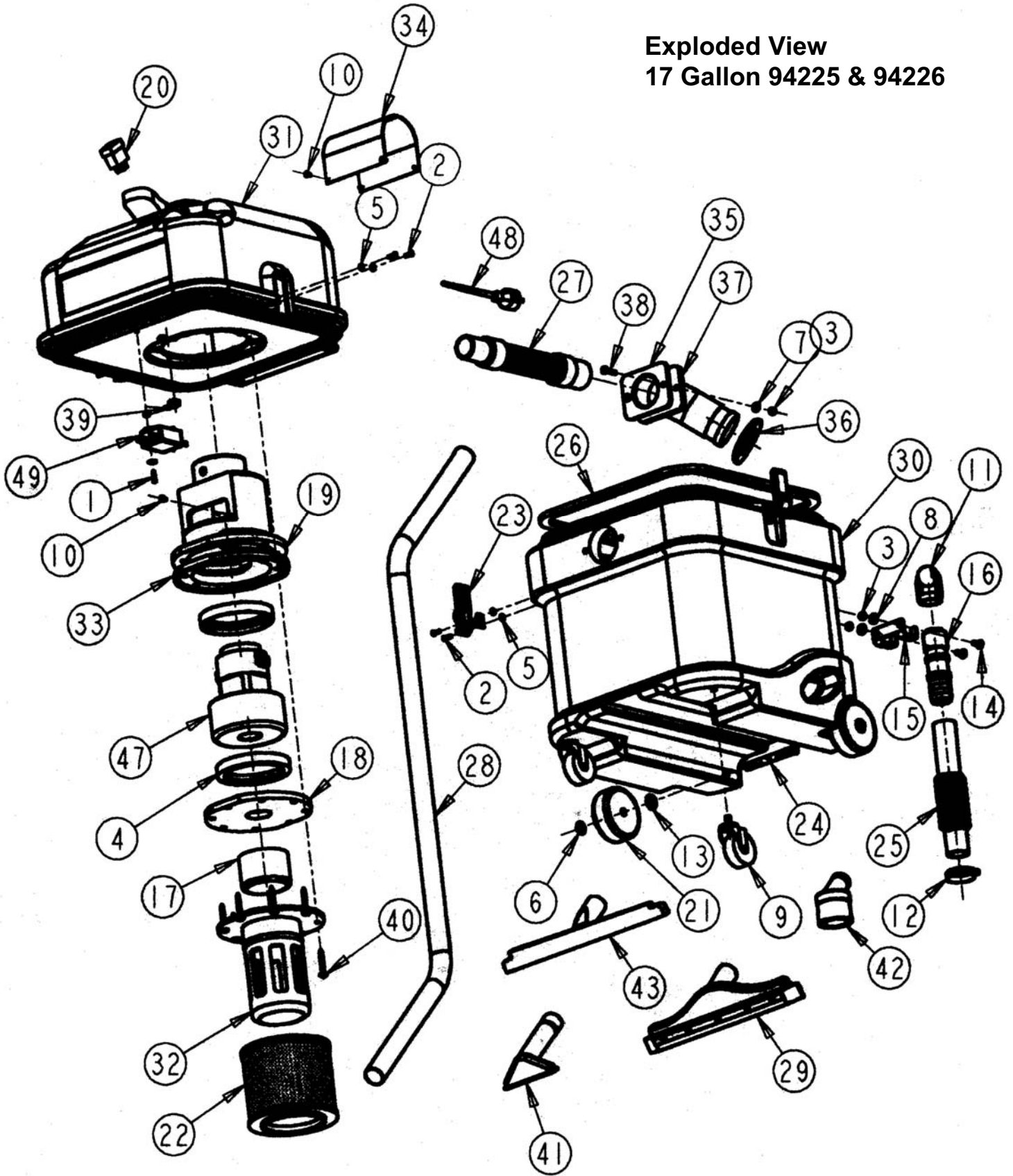


## Parts List 12 Gallon 94221

### BILL OF MATERIALS

ITEM	QTY	PART NUMBER	DESCRIPTION
1	2	00600	SCREW-SLOTTED ROUND HEAD MACHINE #8-32 x 3/4
2	8	01451	SCREW-PHILLIPS PAN HEAD MACHINE #8-32 X 5/8
3	2	01497	NUT-FINISHED HEX 1/4-20
4	2	02941	GASKET-MOTOR
5	10	02956	NUT-HEX LOCK (KEPS) #8-32
6	2	07539	NUT-PUSH 1/2
7	4	07741	WASHER-SEALING 1/4
8	2	10669	CASTER-SWIVEL
9	2	12554	WASHER-PLAIN 1/2
10	5	13330	SCREW-TFT (A) PAN HD #10-12X3/8" LG.
11	6	19616	WASHER-PLAIN .563
12	1	30234	FLOAT
13	1	30239	GASKET, MOTOR NO ADHESIVE
14	1	30240	GASKET, MOTOR W/ ADHESIVE
15	1	30241	SWITCH-ROCKER ON/OFF
16	2	30243	WHEEL-4" DIA.
17	1	30244	FILTER-CELLULOSE, PLASTIC
18	2	30245	LATCH-PLASTIC
19	2	30248	PIN,CLEVIS 1/2 X 4-3/4" LG.
20	1	30255	GASKET, MAIN COVER W/ADHESIVE
21	1	30257	HOSE-POLY 1-1/2" X10' LG.
22	1	30258	WAND-ALUMINUM (2 PIECE) 54"
23	1	30486	ASS'Y=SQUEEGEE 14"
24	1	30625	12 GALLON BASE
25	1	30631	TOP COVER
26	1	30633	FLOAT CAGE
27	1	30635	HOUSING VAC MOTOR
28	1	30706	SHROUD MOTOR
29	1	30718	MOTOR-VACCUUM, 1.5 HP, 230V
30	1	30804	ELBOW-TANK
31	1	30824	GROMMET 2" I.D.
32	1	30825	GASKET
33	2	30826	SCREW-PHILLIPS PAN HEAD MACHINE 1/4-20 X 1-1/2
34	8	30911	CLIP-TOP COVER
35	8	30919	SCREW-FORMING TRUSS HD #14X1.50 LG.
36	1	31059	POWER CORD, 230 V
37	1	31067	LINE FILTER
38	1	90711	TOOL UPHOLSTERY (1-1/2")
39	1	90712	TOOL-DUSTING ROUND (1-1/2")
40	1	90714	TOOL-BARE FLOOR (1-1/2")
40	1	15468	DECAL, "TORNADO LOGO"
41	1	19364	DECAL, WARNING LABEL
42	2	19290	FEMALE CONNECTORS, MOTOR

Exploded View  
17 Gallon 94225 & 94226

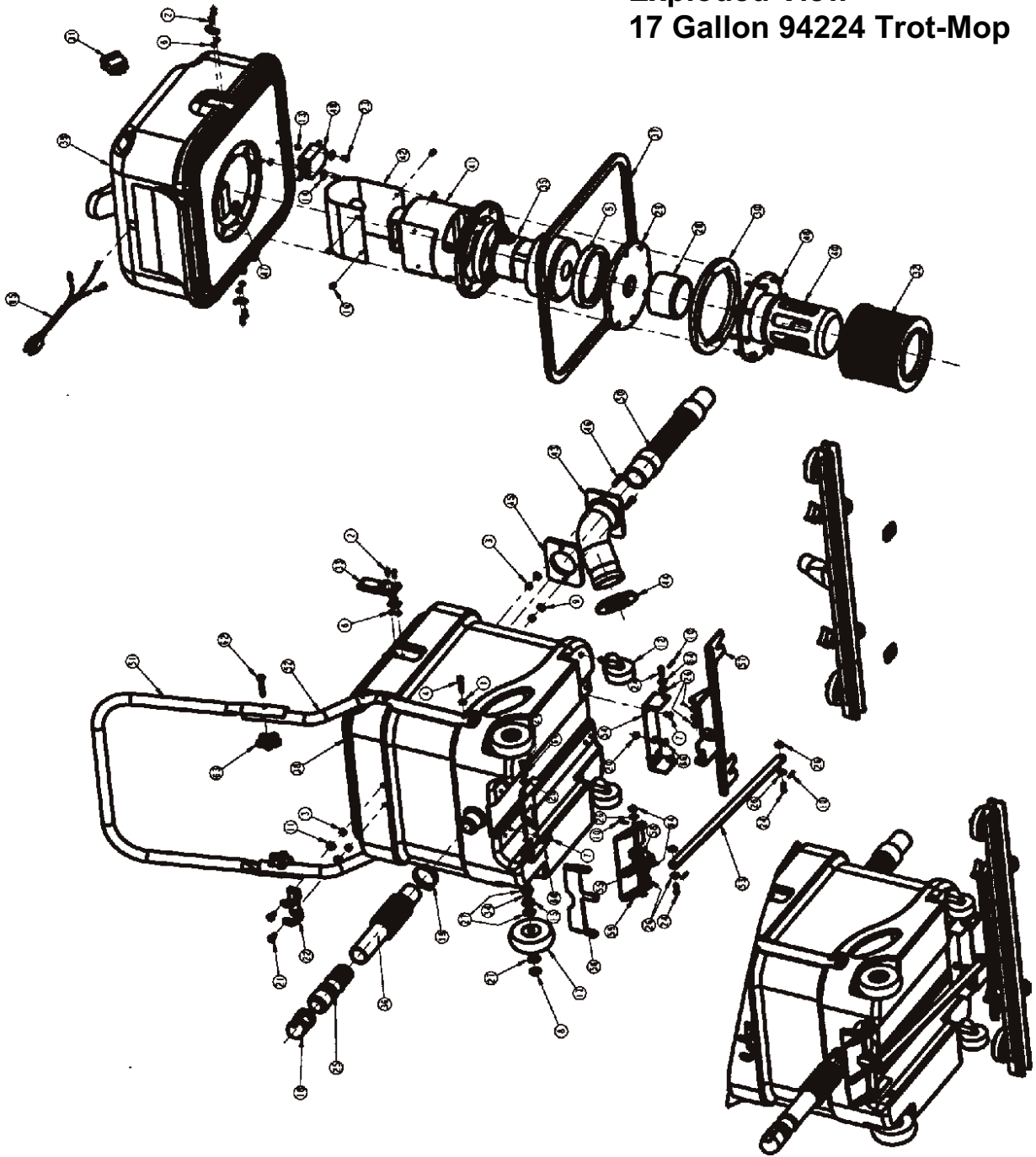


## Parts List 17 Gallon 94225 & 94226

BILL OF MATERIALS			
ITEM	QTY	PART NUMBER	DESCRIPTION
1	2	00600	SCREW-SLOTTED ROUND HEAD MACHINE #8-32 x 3/4
2	8	01451	SCREW-PHILLIPS PAN HEAD MACHINE #8-32 X 5/8
3	4	01497	NUT-FINISHED HEX 1/4-20
4	2	02941	GASKET-MOTOR
5	10	02956	NUT-HEX LOCK (KEPS) #8-32
6	2	07539	NUT-PUSH 1/2
7	4	07741	WASHER-SEALING 1/4
8	2	10260	WASHER-SEALING
9	2	10669	CASTER-SWIVEL
10	5	13330	SCREW-TFT (A) PAN HD #10-12X3/8" LG.
11	1	16089	STOPPER-RETAINED PLUG (DRAIN HOSE)
12	1	16091	CLAMP-HOSE (SCREW) 1-1/4 X 2" (LINED)
13	2	16581	WASHER-PLAIN 1/2
14	2	16619	SCREW-PHILLIPS TRUSS HEAD MACHINE 1/4-20 X 3/4
15	1	17273	BRACKET-DRAIN HOSE (RETAINING)
16	1	18563	NOZZLE-DRAIN HOSE
17	1	30234	FLOAT
18	1	30239	GASKET, MOTOR NO ADHESIVE
19	1	30240	GASKET, MOTOR W/ ADHESIVE
20	1	30241	SWITCH-ROCKER ON/OFF
21	2	30243	WHEEL-4" DIA.
22	1	30244	FILTER-CELLULOSE
23	2	30245	LATCH-PLASTIC
24	2	30248	PIN,CLEVIS 1/2 X 4-3/4" LG.
25	1	30253	HOSE W/ BELLOWS
26	1	30255	GASKET, MAIN COVER W/ADHESIVE
27	1	30257	HOSE-POLY 1-1/2" X10' LG.
28	1	30258	WAND-CHROME 54"
29	1	30486	ASS'Y=SQUEEGEE 14"
30	1	30629	17 GALLON BASE
31	1	30631	TOP COVER
32	1	30633	FLOAT CAGE
33	1	30635	HOUSING VAC MOTOR
34	1	30706	SHROUD-MOTOR
35	1	30804	ELBOW-TANK
36	1	30824	GROMMET 2" I.D.
37	1	30825	GASKET
38	2	30826	SCREW-PHILLIPS PAN HEAD MACHINE 1/4-20 X 1-1/4
39	8	30911	CLIP-TOP COVER
40	8	30919	SCREW-FORMING TRUSS HD #14X1.50 LG.
41	1	90711	TOOL UPHOLSTERY (1-1/2")
42	1	90712	TOOL-DUSTING ROUND (1-1/2")
43	1	90714	TOOL-BARE FLOOR (1-1/2")
44	2	19290	FEMALE, CONNECTORS-MOTORS
45	1	15468	DECAL, TORNADO LOGO
46	1	19364	DECAL "WARNING LABEL"
47	1	30251	MOTOR, 120V., (MODEL #94225)
	1	30718	MOTOR, 230V., (MODEL #94226)
48	1	30482	POWER CORD ASS'Y, 25' FT. 120V. (MODEL #94225)
	1	31059	POWER CORD ASS'Y, 25' FT. 230V. (MODEL #94226)
49	1	31067	LINE FILTER (MODEL #94226)

\*Item Not Shown

**Exploded View  
17 Gallon 94224 Trot-Mop**



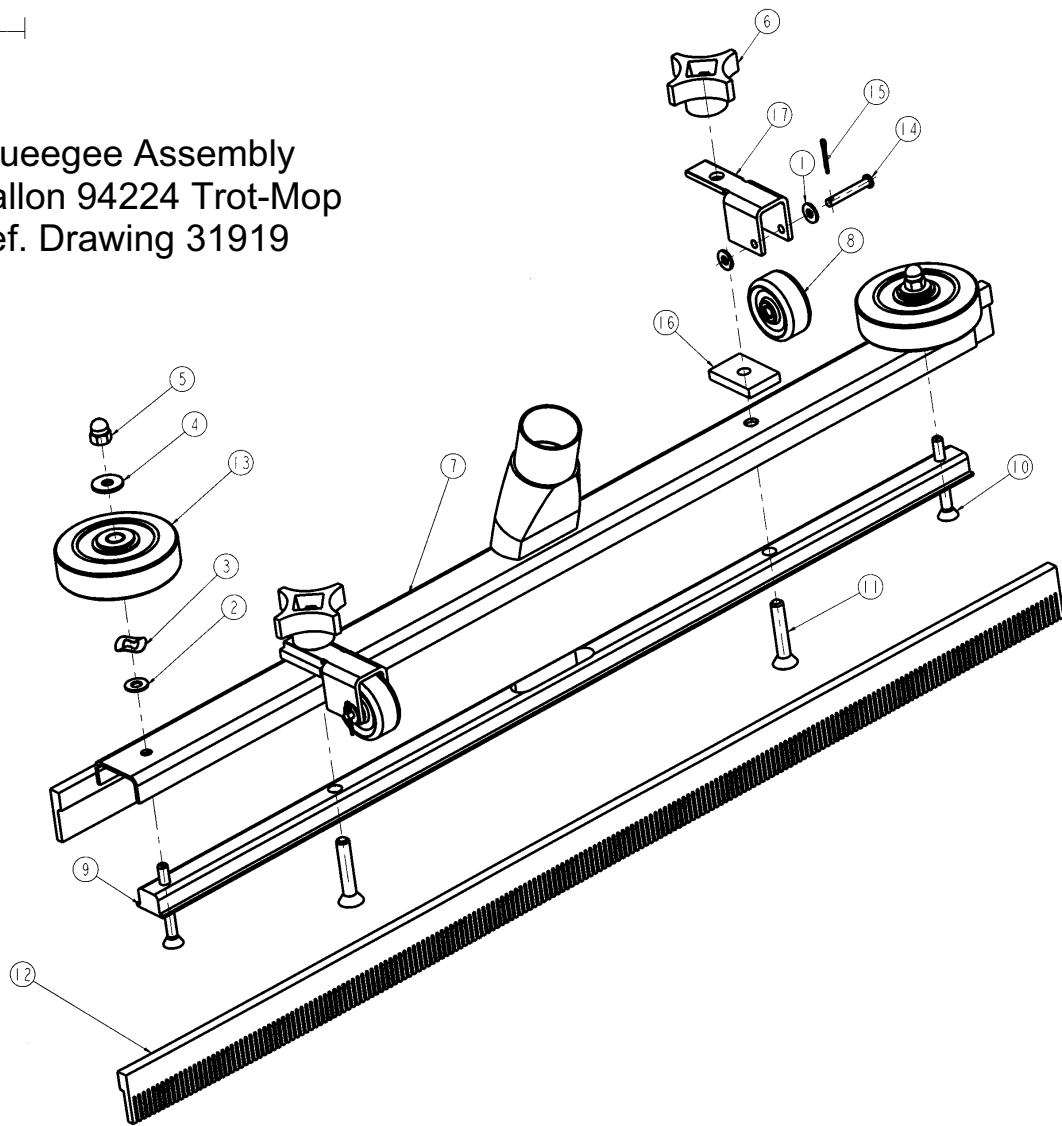
Parts List  
94224 17 Gallon Trot-Mop

ITEM	QTY	PART #	DESCRIPTION
1	4	00851	WASHER-PLAIN 1/4"
2	8	01451	SCREW-PHIL. PAN HD MACH #8-32 X 5/8 (ZP)
3	4	01497	NUT-FINISHED HEX 1/4-20 (NICK)
4	4	01978	SCREW-PHIL. RND HD MACH 1/4-20 X 1-1/2 (ZP)
5	2	02941	GASKET - MOTOR
6	8	02956	NUT-HEX.LOCK(KEPS) # 8-32
7	8	04442	SCREW-PHIL. PAN HD MACH 1/4-20 X 1/2 (ZP)
8	2	07539	NUT-PUSH 1/2
9	2	07741	WASHER-SEALING 1/4
10	8	09087	PIN-COTTER 1/16 DIA X 1/2 E/P
11	2	10260	WASHER-SEALING FOR 5/16 SCREW
12	2	10669	CASTER-SWIVEL,GREY WHEEL
13	2	10892	NUT-HEX.LOCK(KEPS) #10-24
14	2	11385	WASHER-SEALING #10
15	2	12554	WASHER-PLAIN 1/2 ID (NATURAL NYL.)
16	4	13330	SCREW-TFT (A) P.H. #10-12 X 3/8 (BLK.OXID)
17	2	14817	WHEEL 4 X 1-1/4
18	1	16089	STOPPER, RETAINED PLUG DRAIN HOSE
19	1	16091	CLAMP-HOSE(SCREW) 1-1/4"-2"(LINED)
20	2	16129	NUT-HEX.LOCK(KEPS) 1/4-20
21	2	16619	SCREW-PHIL. TRUSS HD 1/4-20 X 3/4 (ZP)
22	1	17273	BRACKET-DRAIN HOSE RETAINING
23	2	17848	SCREW-PHIL. TRUSS HD #10-24 X 1/2 (SS)
24	6	18082	PIN-CLEVIS,1/4"DIA.
25	1	18563	NOZZLE-DRAIN HOSE (HM-4000 & F/K'S)
26	16	18885	WASHER-PLAIN 1/4 ID (SS)
27	6	19616	WASHER-PLAIN .563 ID (SS)
28	1	30234	FLOAT (BLK) ORDER W/30631
29	1	30239	GASKET-MOTOR(.5"THK.PVC) (94220,225-)NO ADHESIVE
30	1	30240	GASKET-MOTOR LID(8"O.D.) (94220,225-) W/ADHESIVE
31	1	30241	SWITCH-ROCKER ON/OFF(DP) (WETDRY) 10A/250,15/125
32	1	30244	FILTER-CELLULOSE,PLASTIC (WETDRY) FLTR: FA-6042A
33	2	30245	LATCH-PLASTIC (BLACK)
34	2	30248	PIN-CLEVIS 1/2"D X 4-3/4"LONG (ZP)
35	1	30251	MOTOR-VACUUM,1.6 HP,115V 2 STAGE,SSBYPASS 50-60HZ
36	1	30253	HOSE-BELLOWS EPDM/BLK 1-1/2 X 10-3/8" LG.
37	1	30255	GASKET,MAIN COVER(.38") (94220-) W/ADHESIVE
38	1	30629	BASE-(YEL) 17 GAL. ORDER W/ 30633 & 30635
39	1	30631	COVER-VAC (BLK) ORDER W/ 30234
40	1	30633	FLOAT CAGE (YEL) ORDER W/30625 OR 30629 & 30635
41	1	30635	HSG-VAC MOTOR (YEL)ORDER W/30625 OR 30629 & 30633
42	1	30706	SHROUD, MOTOR
43	1	30804	ELBOW, TANK (WET/DRY)
44	1	30824	GROMMET 2" I.D.
45	1	30825	GASKET-SINGLE SIDE ADHESIVE (BLACK)
46	2	30826	SCREW-PHIL. PAN HD MACH 1/4-20 X 1-1/4 (BLK.OXD)
47	8	30911	CLIP (WET/DRY)
48	8	30919	SCREW-FORMING TRUSS HD #10-14 X 2-1/2"LG. (ZP)
49	1	31067	POWER LINE FILTER (RFI) 6A,120/250V,50-60HZ
50	1	31826	HOSE-POLYETHYLENE (BLK) 1-1/2 X 21" W/CUFFS
51	1	31896	HANDLE-UPPER 1" DIA.1PER (TROT-MOP) ORD W/31897
52	2	31897	HANDLE-LOWER 1" DIA.2PER (TROT-MOP) ORD W/31896
53	1	31899	LINK-SQUEEGEE (TROT-MOP)

54	1	31900	MOUNT-FRONT BRACKET (TROT-MOP)
55	1	31903	SHAFT-1/4" DIA. (BLK) (TROT-MOP)
56	1	31904	MOUNT-RELEASE (TROT-MOP)
57	1	31905	WELDMENT-SUPPORT (TROT-MOP)
58	1	31906	SPRING 5.5 IN/LBS. .063 DIA. STEEL WIRE
59	1	31910	WELDMENT-PEDAL LIFT (TROT-MOP)
60	1	31918	WELDMENT-MOUNT REAR (TROT-MOP) BLACK
61	1	31919	TROT-MOP SQUEEGEE 30"
62	2	31926	BOLT-CARG.OVAL HEAD (BL) 1/4-20 X 2.00 LG/1"THRD
63	2	31927	KNOB-1-1/2"DIA. (4) ARM 1/4-20 THRU THREADED INSERT
64	10	31928	WASHER-PLAIN 1/4 ID (NEO)
65	1	31962	ASSEMBLY-POWER CORD,115V 14/3 X 50' (MALE PLUG)
66	1	31983	BOLT-CARG.OVAL HEAD (BK) 1/4-20 X 2.23 LG/1"THRD
67*	4	17784	PLUG-TUBE,18 GA. X 1"OD
68*	1	19364	LABEL-"WARNING: TO REDUCE THE RISK OF..."
69*	1	30817	DECAL-TORNADO W/ LOGO 2.25 WIDE X 9.50 LG. WHT
70*	1	32325	BRACKET REINFORCEMENT TROT-MOP

\* ITEM NOT SHOWN

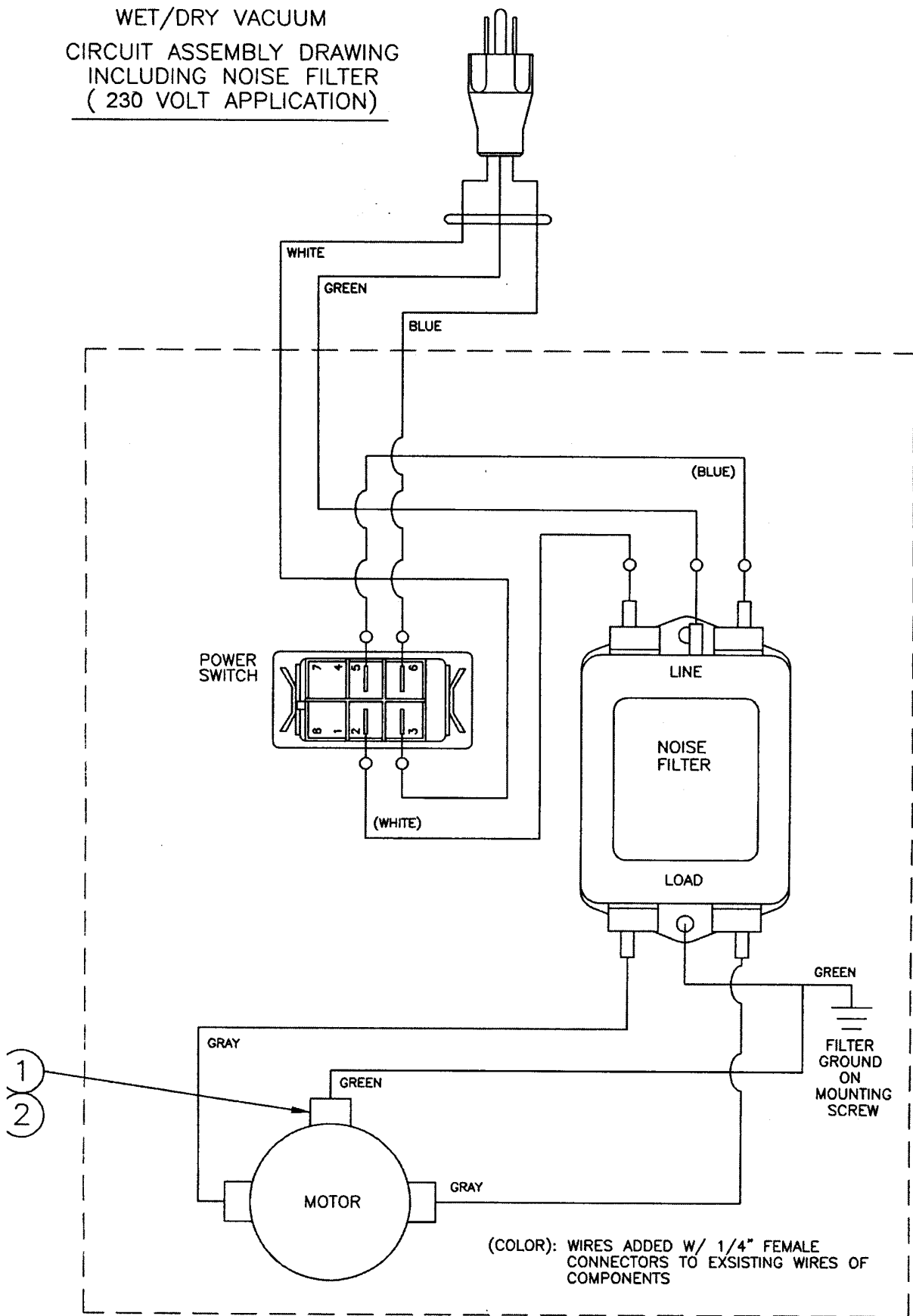
Squeegee Assembly  
 17 Gallon 94224 Trot-Mop  
 Ref. Drawing 31919



BILL OF MATERIALS			
ITEM	QTY	PART NUMBER	DESCRIPTION
1	4	00696	WASHER-PLAIN #10
2	2	00851	WASHER
3	2	07132	WASHER-SPRING 3/8
4	2	14142	WASHER-PLAIN .265
5	2	17130	LOCKNUT, ACORN 1/4-20
6	2	18119	KNOB
7	1	18136	CHANNEL OUTER
8	2	18400	WHEEL 1-5/8" DIA.
9	1	18663	RETAINER SQUEEGEE BLADE
10	2	18680	SCREW FLAT CAP X 2-1/4" LG.
11	2	18681	SCREW FLAT CAP X 1-3/4" LG.
12	2	18730	SQUEEGEE BLADE
13	2	30044	WHEEL-BUMPER
14	2	30226	PIN-CLEVIS .32 DIA. X 1-1/4" LG.
15	2	30227	PIN-COTTER 5/64 X 1/2 STL
16	2	31139	SPACER TAB 5/16-18
17	2	31979	BRACKET WHEEL MOUNT
18	1	17502	LABEL "TROT-MOP" *

\* ITEMS NOT SHOWN

WET/DRY VACUUM  
 CIRCUIT ASSEMBLY DRAWING  
 INCLUDING NOISE FILTER  
 ( 230 VOLT APPLICATION)



TORNADO PART NO. (WIRING DIAGRAM ONLY): 31079 REV A